



PARTS CATALOG

Published

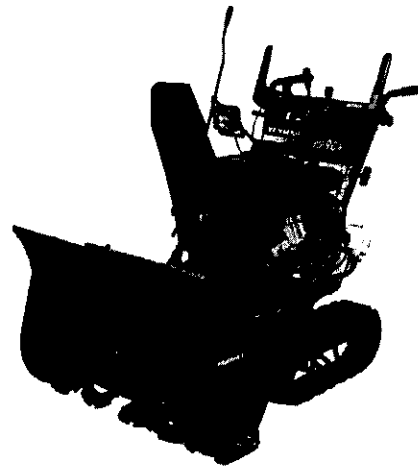
2009/5 (May.)

0CNP4-G09100

YANMAR SNOW THROWER
YSR90H
YSR90H-S
YSR100H-S

PARTS CATALOG

NPC-409 I



YANMAR AGRICULTURAL EQUIPMENT CO.,LTD.

YOUR PARTS ORDERING

- When placing your parts order with us, Please contact us upon confirming the Model, Part No, Description and Q'ty of the parts you want to order by this parts catalog.
First look for the illustration of the part you want. Then you can find out the necessary informations by tracing the illustration No., as each illustration corresponds to the parts list on the following page.
- All parts the illustrations of which are not numbered shall not be sold separately.
- You are asked to prepare parts, especially consumable parts in the demand season earlier, as orders will come with a rush in this season.
- Parts other than those due to misshipping on your part shall not be allowed to returned in principle.
- Please surely use YANMAR Genuine Parts in any YANMAR Product.
(Use of similar goods (parts) on the market causes earlier damage or worsening of performance.)

HOW TO READ THIS PARTS CATALOG

- In the case where a Ref. No. given in the list does not agree with the corresponding Sketch No. in illustration (no suffix number as shown below), an illustration for such a New Part has been omitted only in the case of a parts change for which interchangeability Symbol N, R or K is given.

[Example]

Sketch No. in Illustration	Ref. No. in List	
1	1	(Before the change)
2	1	(After the change)
	2	

- Indication and meaning of level Level

-A number of dots indicated is called the level which refers to the assembly-component relation of an assembly part.
(* refers to an assembly part.)
-Refers to a component included in an assembly part indicated by one dot (*).
-Refers to a component included in a complete part indicated by two dots (**).
(It indicates a sub-component of pertinent assembly part indicated by one dot (*).)

- Indication and meaning of interchangeability symbol

(Given under the column "I" next to the quantity column in the list)

In the case where a parts change took place, one of the following interchangeability symbols is indicated for that part:

Symbol	Interchangeability	Contents note
N	New $\begin{array}{c} \circ \\ \rightarrow \\ \times \end{array}$ Old	New Part is interchangeable for Old Part but not interchangeable conversely.
P	New $\begin{array}{c} \circ \\ \rightarrow \\ \times \end{array}$ Old	Same as symbol N but supply of Old Part is suspended and New Part is sold in the future.
Q	New $\begin{array}{c} \times \\ \rightarrow \\ \circ \end{array}$ Old	New Part is not interchangeable for Old Part but interchangeable conversely.
R	New $\begin{array}{c} \circ \\ \rightarrow \\ \circ \end{array}$ Old	New Part is interchangeable for Old Part and vice versa.
S	New $\begin{array}{c} \times \\ \rightarrow \\ \times \end{array}$ Old	New Part is not interchangeable for Old Part and vice versa.
W		Part newly added.
Z		Part discontinued.
F		Not interchangeable by single part but interchangeable by set of the related parts.
K		Changed only in quantity used.

- Remarks (column "R" given at the right end of the list)
9-1) A numerical or alphabetic character (symbol) may be indicated under the column "R".
9-2) A comment (remarks) for a part in question is given at the lower part of the list, following a symbol identical to the aftermentioned symbol when a symbol is indicated under the column "R".

- Virtual No. in illustration

A Sketch No. in illustration containing an encircled numeral indicates other related Group No.

[Example]

③ - 1	Group No. 3	indicated.
	Ref. No. 1	

- Change Effective Machine No.

When a part is changed, a Change Effective Machine No. of such a model for which a New Part is applied is indicated as follows:

[Example] Model columns A ~ F

(Model indication is given in two kinds, namely, 4-model and 6-model indications.)
correspond to A ~ F in front of Change Effective Machine No..

4-model Indication

(A) =
(B) =
(C) =
(D) =

6-model Indication

(A) =	(D) =
(B) =	(E) =
(C) =	(F) =

[Example] A=F610001 B=F612001

Model column A indicates that a parts change is put into effect from Machine No. 610001 and on, and moreover Model column B indicates that a parts change is put into effect from Machine No. 612001 and on.

[Classification]

E Engine No.	indicated.
F Machine Body No.	
R Rotary Unit No.	

- Additional Group No. found in the Revised Edition

Kindly understand that a Group No. other than consecutive numbers has been entered in the case where the corresponding Group is added within the pertinent Section.

[Example]

Section

BODY SECTION

Group No. Group name

- 46. ENGINE FIXTURE & BATTERY
- 47. FRAME & HYDRAULIC PUMP
- 48. BEVEL GEAR CASE
- 49. TRANSM. CASE & RUNNING CLUTCH
- 50. CONTROL LEVERS
- 51. CRAWLER
- 64. ENGINE FIXTURE & BATTERY
- 65. CONTROL LEVERS
- SNOW REMOVAL SECTION
- 52. CHUTE
- 53. SNOW REMOVAL FRAME & BLOWER

(Group added for the YSR1300-N)

(Group added for the YSR1300-N)

Additional Groups are indicated.

Owing to the improvement of YANMAR Product involved or its parts, the contents of this Parts Catalog may be altered without prior notice to you.

SPECIFICATIONS

Model and Specifications		YSR90H	YSR100H	
Dimensions	Overall length (mm)	1320	1320	
	Overall width (mm)	751	841	
	Overall height (mm)	1147	1147	
Dry weight	Recoil start (kg)	136	-	
	Cell start (kg)	144	150	
Engine	Model (Recoil) (Recoil & Cell)	GA240E-SJ1 GA240E-SEJ1	- GA280E-SEJ2	
	Type	OHV 4-cycle gasoline	OHV 4-cycle gasoline	
	Displacement (cc)	240	273	
	Maximum output (kw/ps)	6.2/8.5	7.2/9.8	
	Traveling section	Crawler width (mm)	120	120
Traveling section	Transmission	HST	HST	
	Speed	Forward (km/h)	0 - 3.4	0 - 3.4
		Reverse (km/h)	0 - 2.0	0 - 2.0
Snow throwing section	Snow throwing device	2-stage auger blower system	2-stage auger blower system	
	Auger diameter (mm)	350	350	
	Blower diameter (mm)	300	300	
	Chute turning angle (degrees)	240 (Left 120, Right 120)	-	
Snow throwing capacity	Snow throwing width (mm)	710	800	
	Snow throwing height (mm)	588	588	
	Snow throwing capacity (t/h)	45	50	
		(Depending on snow conditions)	(Depending on snow conditions)	
	Snow throwing distance (m)	15 (Depending on snow conditions and snow throwing direction)	17 (Depending on snow conditions and snow throwing direction)	

PAINTING COLOR (Main body : YSR90H, 100H)

4091

SECTION	PAINTING COLOR	COLOR SPRAY	MAIN PARTS	COLOR CODE (FIGURE)
Main body	YANMAR Red 2	TOR-90000004	Handle	10
Main body	YANMAR Black	TOR-90220003	Chassis	12
Main body	YANMAR Navy gray	TOR-90390002	Lift cover	49

Please surely use **YANMAR** Genuine color spray any **YANMAR** agricultural machines.

Given painting color may be altered for improvement, etc.
without prior notice.

DEPLOYMENT ENGINE MODEL TABLE

SNOWPLOW			ENGINE	
MODEL	PARTS CATALOG No.	UNIT NO.	MODEL	PARTS CATALOG No.
YSR90H (-S,-CH,-SCH)	0CNP4-G09100	~ F010859	GA240E-S(E)J1	0CNP4-G09300
		F010860 ~	GA240E-AS(E)J1	0CNP5-G22800

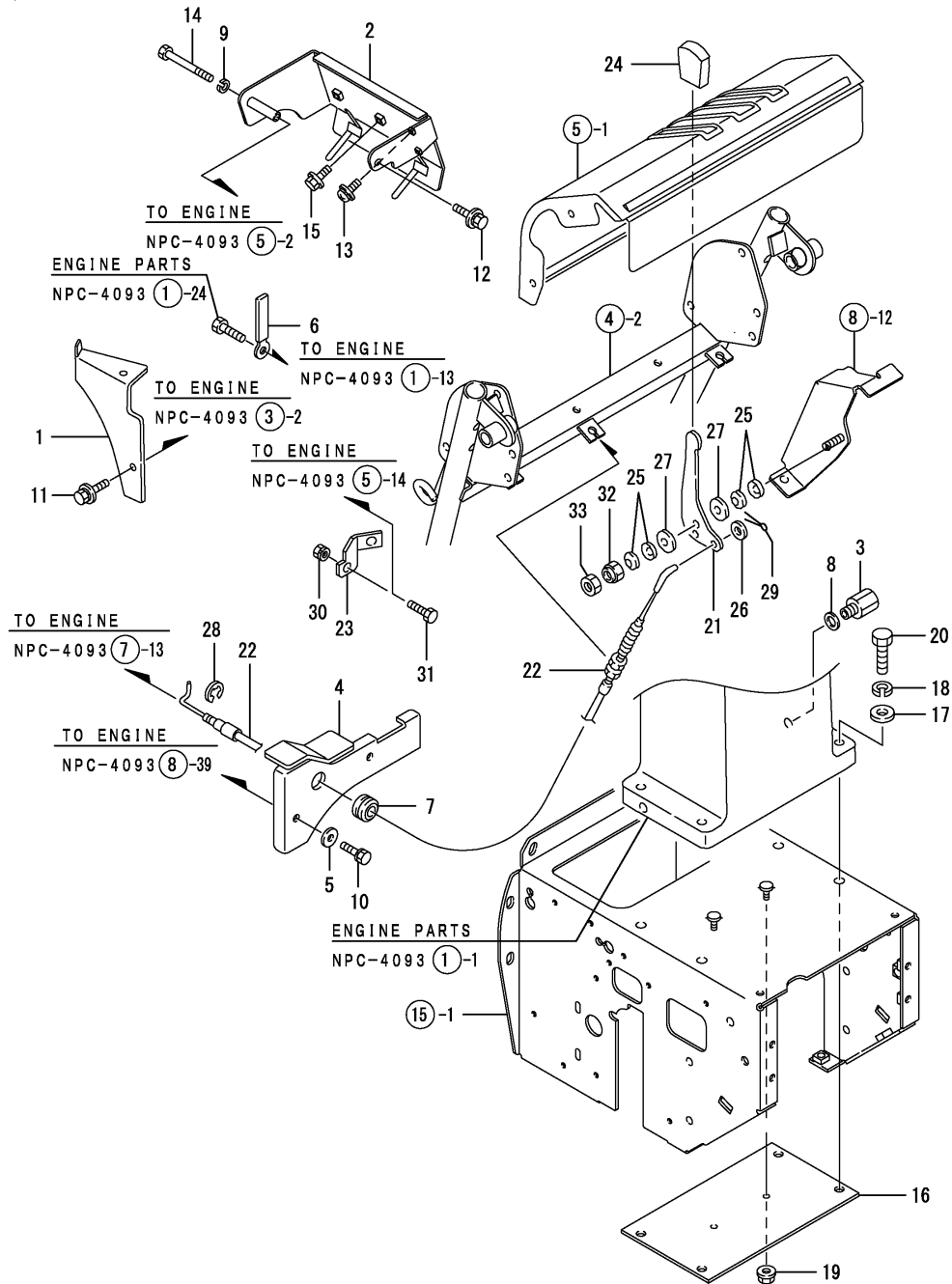
CONTENTS

MODEL : YSR90H,100H
PC NO : 0CNP4-G09100

Fig.No.	GROUP NAME
ENGINE RELATED SECTION	
1.	ENGINE RELATED
DRIVE TRAVEL SECTION	
2.	TENSION CLUTCH
3.	ENGINE PULLEY & BELT
CONTROL SECTION	
4.	HANDLE
5.	CONTROL PANEL
6.	DEAD MAN LEVER
7.	CLUTCH & CLUTCH LOCK
8.	CHANGE LEVER
9.	CHANGE ROD
10.	BRAKE
11.	BYPASS LEVER
12.	CHUTE LEVER
13.	CHUTE HANDLE
14.	LIFTING
CHASSIS,COVER & CRAWLER SECTI.	
15.	CHASSIS FRAME
16.	BELT COVER
17.	CRAWLER
ELECTRICAL PARTS SECTION	
18.	BATTERY
19.	HARNESS & SWITCH
20.	HARNESS & SWITCH
21.	LAMP

Fig.No.	GROUP NAME
SNOW REMOVING SECTION	
22.	SNOW REMOVING FRAME
23.	AUGER COVER
24.	CHUTE
25.	GEAR CASE
26.	AUGER & BLOWER
LABELS & ACCESSORIES SECTION	
27.	LABELS
28.	LABELS (SAFETY)
29.	TOOLS & ACCESSORIES
TRANSMISSION SECTION	
30.	TRANSMISSION

Fig.1. ENGINE RELATED



(A)=YSR90H
(B)=YSR90H-S
(C)=YSR100H-S

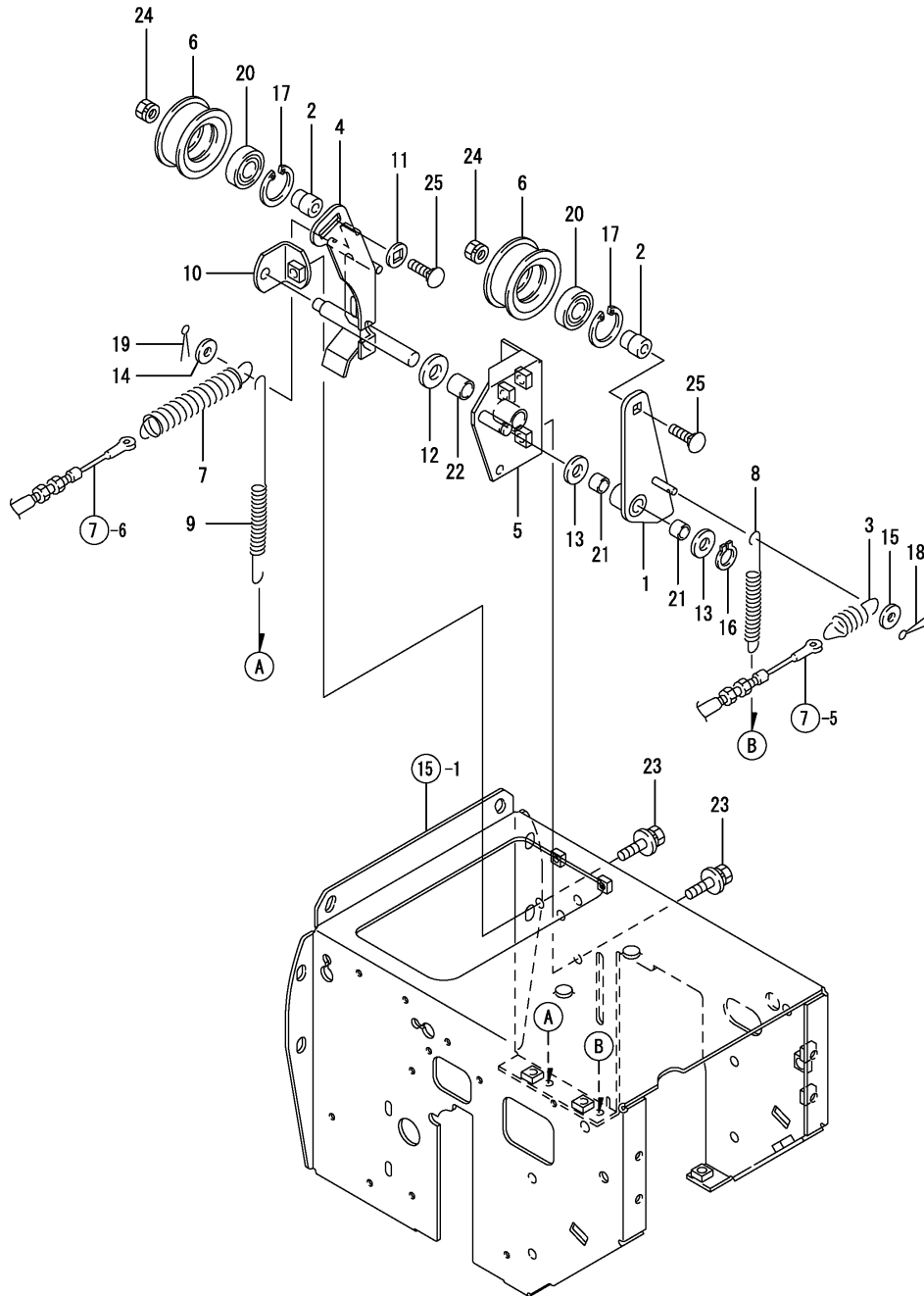
(D)=
(E)=
(F)=

REF.	LEV.	PARTS NO.	DESCRIPTION	QTY						I	R
				(A)	(B)	(C)	(D)	(E)	(F)		
1	1	1N1723-00061	COVER B,AMXILIARY	1	1	1					
2	1	1N3370-00200	BRACKET, ELECTRIC	1	1	1					
3	1	1N3021-00250	JOINT,WASTE OIL	1	1	1					
4	1	1N1723-00331	COVER	1	1	1					
5	1	1J3999-02010	WASHER 6	2	2	2					
6	1	1N1710-32600	CLAMP 8X70	1	1	1					
7	1	194080-58820	GROMMET 15	1	1	1					
8	1	22190-120000	SEAL WASHER 12(BOLT)	1	1	1					
9	1	22217-060000	SPRING WASHER 6	1	1	1					
10	1	26016-060204	BOLT M 6X 20	2	2	2					
11	1	26018-060124	BOLT M 6X 12	2	2	2					
12	1	26018-060124	BOLT M 6X 12	1	1	1					
13	1	26023-040062	SCREW M 4X6	2	2	2					
14	1	26116-060552	BOLT M 6X 55 PLATED	1	1	1					
15	1	26106-060162	BOLT M 6X 16 PLATED		2	2					
16	1	1N3370-01000	PLATE, ENGINE CATCH	1	1	1					
17	1	22137-100000	WASHER 10,POLISHED	4	4	4					
18	1	22217-100000	SPRING WASHER 10	4	4	4					
19	1	26051-060002	NUT M 6	2	2	2					
20	1	26116-100402	BOLT 10X 40	4	4	4					
21	1	1N3390-02100	LEVER,ACCEL	1	1	1					
22	1	1N3300-02150	WIRE ASSY, THROTTLE	1	1	1					
23	1	1N3400-02200	SEAT,FO COCK	1	1	1					
24	1	194273-47910	KNOB	1	1	1					
25	1	1N1570-51130	SPRING,BELLEVILLE	4	4	4					
26	1	22117-060000	WASHER 6	1	1	1					
27	1	22137-080000	WASHER 8, POLISHED	2	2	2					
28	1	22272-000050	CIRCLIP E- 5	1	1	1					
29	1	22417-200100	COTTER PIN 2.0X10	1	1	1					
30	1	26051-060002	NUT M 6	1	1	1					
31	1	26117-060122	BOLT M 6X 12 PLATED	1	1	1					
32	1	26347-080002	U-NUT M 8	1	1	1					
33	1	26717-080002	NUT 8	1	1	1					

Fig.2. TENSION CLUTCH

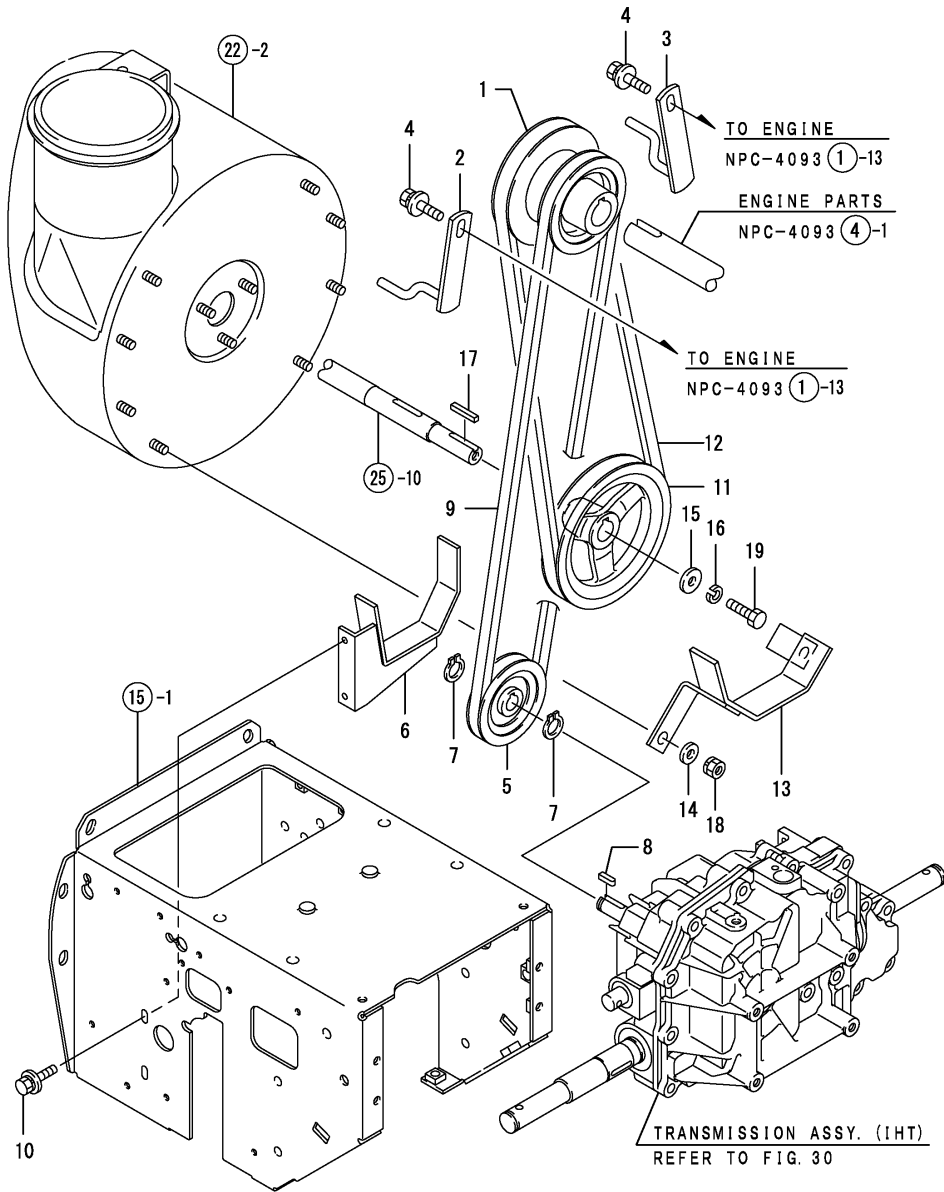
(A)=YSR90H
(B)=YSR90H-S
(C)=YSR100H-S

(D)=
(E)=
(F)=



REF.	LEV.	PARTS NO.	DESCRIPTION	QTY						I	R
				(A)	(B)	(C)	(D)	(E)	(F)		
1	1	1N3370-11000	TENSION,TRAVEL	1	1	1					
2	1	1N3370-11050	SHAFT	2	2	2					
3	1	1N3335-11080	SPRING	1	1	1					
4	1	1N3400-11100	TENSION,WORK	1	1	1					
5	1	1N3370-11200	FULCRUM,TENSION	1	1	1					
6	1	1N3021-11240	PULLEY 63,TENSION	2	2	2					
7	1	1N3370-11271	SPRING, 16X134	1	1	1					
8	1	1N3400-11300	SPRING,13X168	1	1	1					
9	1	1N3370-11310	SPRING, 11X210	1	1	1					
10	1	1N3370-11400	SUPPORT, TENSION	1	1	1					
11	1	1N3320-71290	WASHER	1	1	1					
12	1	22117-120000	WASHER 12	1	1	1					
13	1	22137-100000	WASHER 10,POLISHED	2	2	2					
14	1	22157-060000	WASHER 6	1	1	1					
15	1	22157-060000	WASHER 6	1	1	1					
16	1	22242-000100	CIRCLIP 10	1	1	1					
17	1	22252-000350	CIRCLIP 35	2	2	2					
18	1	22417-160100	COTTER PIN	1	1	1					
19	1	22417-160100	COTTER PIN	1	1	1					
20	1	24107-062024	BALL BEARING	2	2	2					
21	1	24550-010100	BUSH 10X10,DRY	2	2	2					
22	1	24550-013150	BUSHING 13X15	1	1	1					
23	1	26018-080162	BOLT M 8X 16	4	4	4					
24	1	26051-080002	NUT M 8	2	2	2					
25	1	26487-080352		2	2	2					

Fig.3. ENGINE PULLEY & BELT



OCNP4-G09100 3. ENGINE PULLEY & BELT

(A)=YSR90H
(B)=YSR90H-S
(C)=YSR100H-S

(D)=
(E)=
(F)=

REF.	LEV.	PARTS NO.	DESCRIPTION	QTY						I	R
				(A)	(B)	(C)	(D)	(E)	(F)		
1	1	1N3370-12000	PULLEY,ENGINE	1	1	1					
2	1	1N3021-12100	RETAINER A,BELT	1	1	1					
3	1	1N3021-12150	RETAINER B,BELT	1	1	1					
4	1	26018-080162	BOLT M 8X 16	2	2	2					
5	1	1N3021-12020	PULLEY 85A	1	1	1					
6	1	1N3021-12300	GUIDE B,BELT	1	1	1					
7	1	22242-000150	CIRCLIP 15	2	2	2					
8	1	22550-050201	KEY 5X20	1	1	1					
9	1	25122-002901	V-BELT	1	1	1					
10	1	26018-060164	BOLT M 6X 16	2	2	2					
11	1	1N3370-12010	PULLEY 144B	1	1	1					
12	1	1N3021-12050	V-BELT LB31-AG6	1	1	1					
13	1	1N3370-12200	GUIDE A,BELT	1	1	1					
14	1	22137-080000	WASHER 8, POLISHED	2	2	2					
15	1	22157-080000	WASHER 8	1	1	1					
16	1	22217-080000	SPRING WASHER 8	1	1	1					
17	1	22550-050300	KEY 5X30	1	1	1					
18	1	26051-080002	NUT M 8	2	2	2					
19	1	26116-080252	BOLT M 8X 25 PLATED	1	1	1					

Fig.4. HANDLE

OCNP4-G09100 4. HANDLE

(A)=YSR90H
(B)=YSR90H-S
(C)=YSR100H-S

(D)=
(E)=
(F)=

REF.	LEV.	PARTS NO.	DESCRIPTION	QTY						I	R
				(A)	(B)	(C)	(D)	(E)	(F)		
1	1	1N3390-30000	HANDLE	2	2	2					
2	1	1N3400-30100	FRAME,HANDLE	1	1	1					
3	1	1N1710-82140	GRIP BK-8,HANDLE	2	2	2					
4	1	22137-080000	WASHER 8, POLISHED	4	4	4					
5	1	26016-080162	BOLT M 8X 16	4	4	4					
6	1	1N3360-30300	BOLT	2	2	2					
7	1	1N3360-30350	WASHER	2	2	2					
8	1	22217-100000	SPRING WASHER 10	2	2	2					
9	1	26016-100202	BOLT	2	2	2					
10	1	26717-100002	NUT M10	2	2	2					

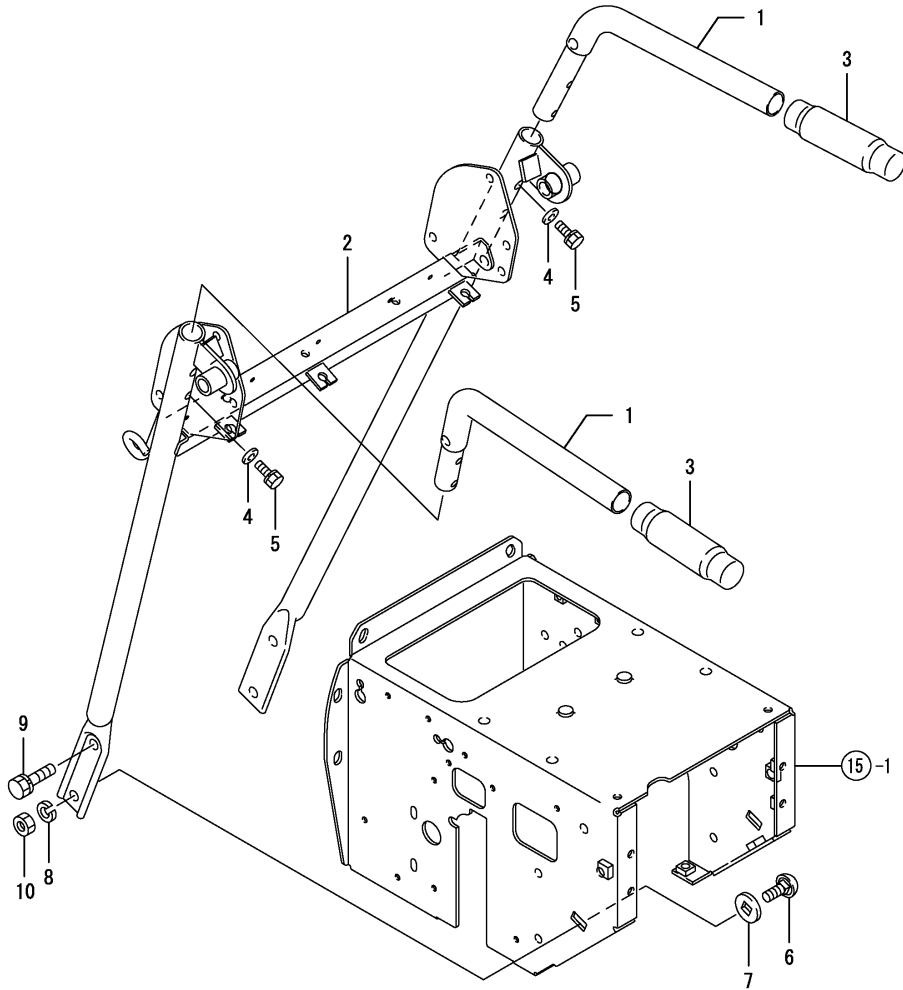


Fig.6. DEAD MAN LEVER

(A)=YSR90H
 (B)=YSR90H-S
 (C)=YSR100H-S

(D)=
 (E)=
 (F)=

REF.	LEV.	PARTS NO.	DESCRIPTION	Q'TY						I	R
				(A)	(B)	(C)	(D)	(E)	(F)		
1	1	1N3390-31000	LEVER, DEAD MAN L	1	1	1					
2	1	1N3390-31050	LEVER, DEAD MAN R	1	1	1					
3	1	1N3320-71290	WASHER	2	2	2					
4	1	22137-080000	WASHER 8, POLISHED	2	2	2					
5	1	26018-080164	BOLT M 8X 16	2	2	2					
6	1	26051-080002	NUT M 8	2	2	2					
7	1	26347-080002	U-NUT M 8	2	2	2					
8	1	26487-080252	BOLT 8X25,SQ.ROOT	2	2	2					

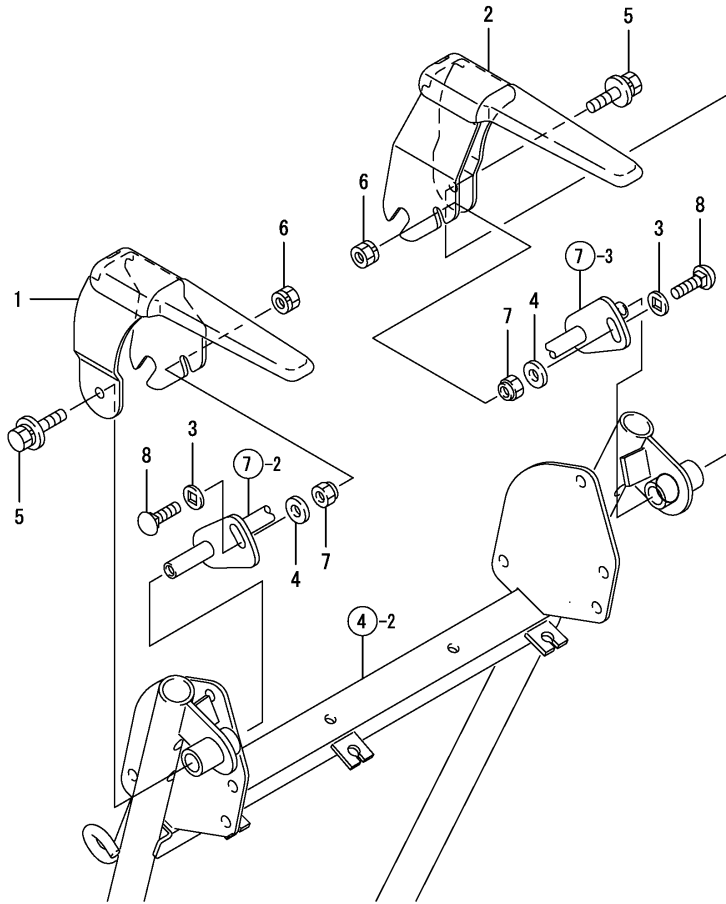
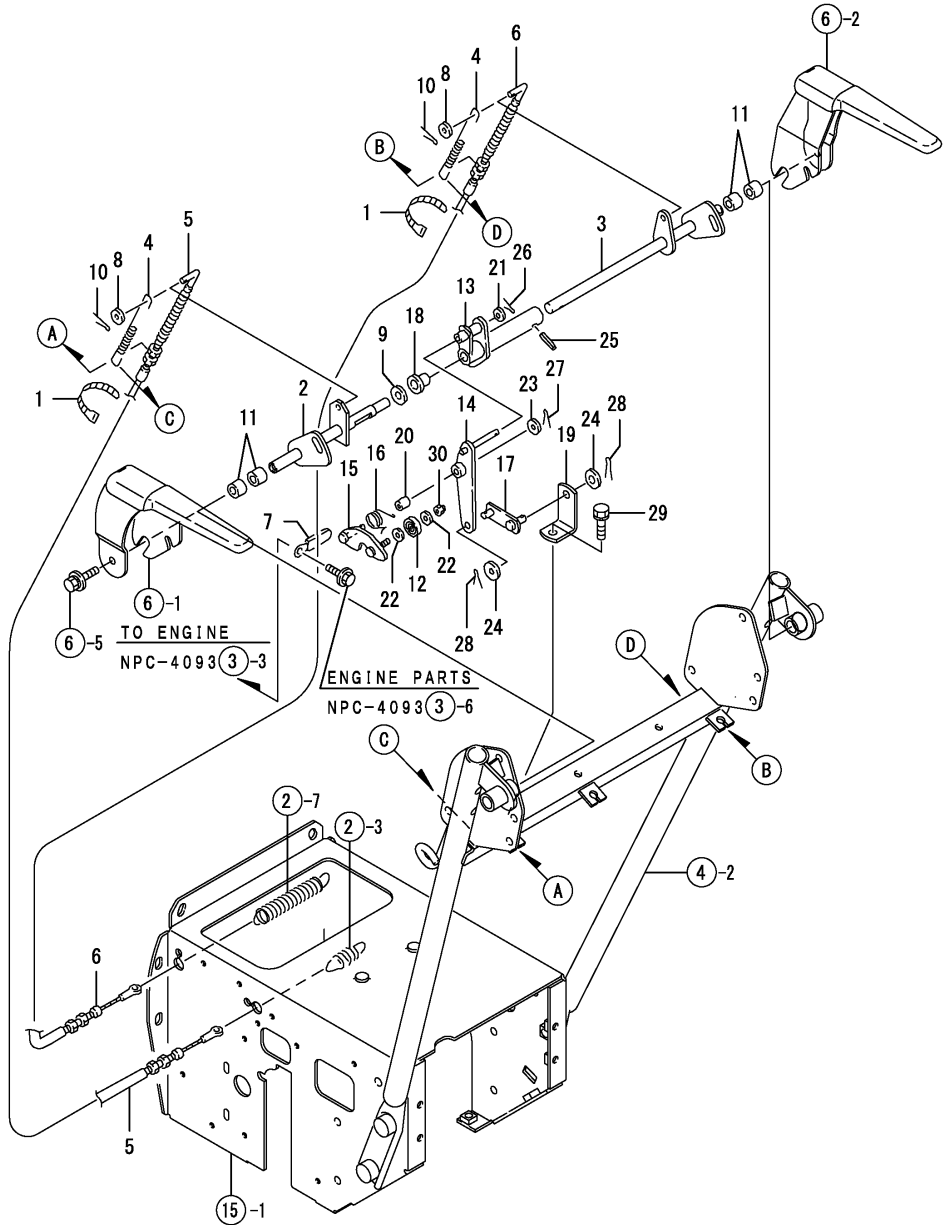


Fig.7. CLUTCH & CLUTCH LOCK

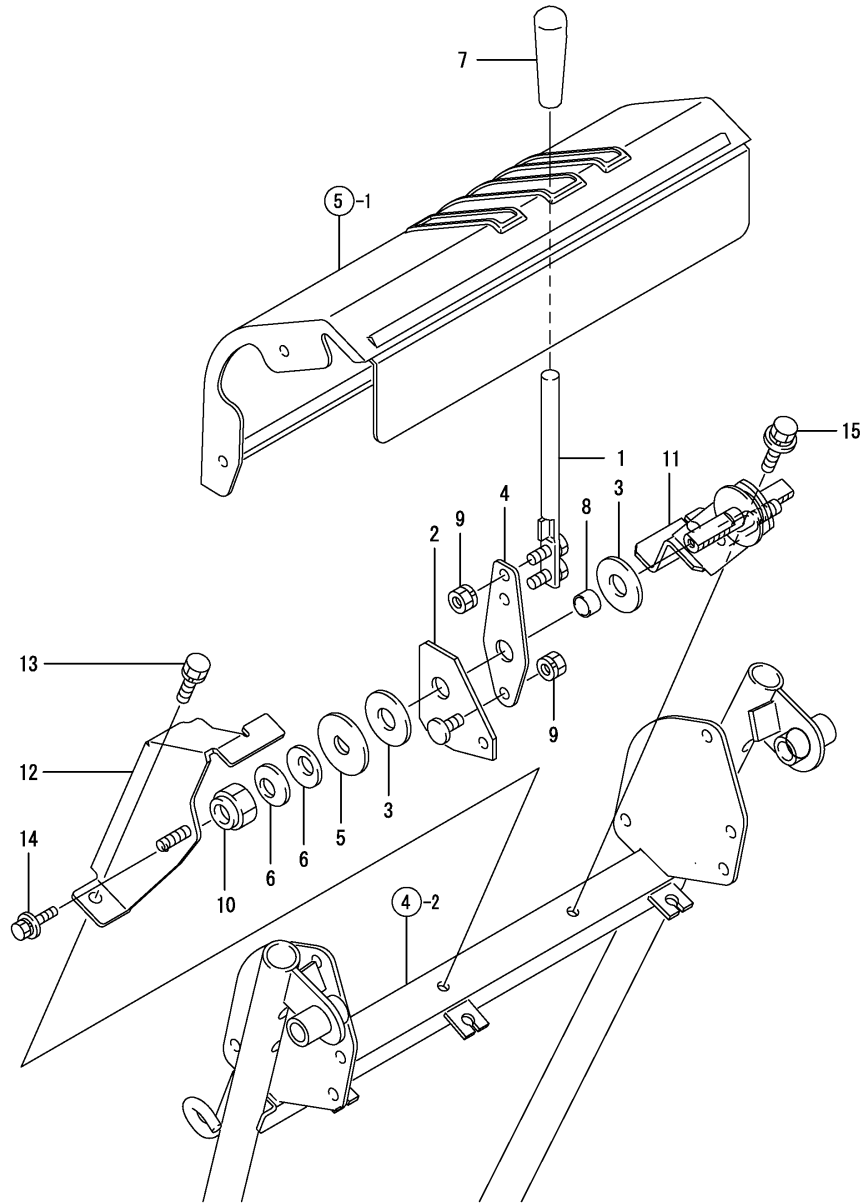
(A)=YSR90H
(B)=YSR90H-S
(C)=YSR100H-S

(D)=
(E)=
(F)=



REF.	LEV.	PARTS NO.	DESCRIPTION	QTY						I	R
				(A)	(B)	(C)	(D)	(E)	(F)		
1	1	1J3999-07000	BAND 100B	3	3	3					
2	1	1N3370-31200	SHAFT,TRAVEL CLUTCH	1	1	1					
3	1	1N3370-31300	SHAFT,SNOW RMV.CLTCH	1	1	1					
4	1	1N3370-31450	SPRING, 9X145	2	2	2					
5	1	1N3370-31600	WIRE,TRAVEL CMP	1	1	1					
6	1	1N3370-31650	WIRE,SNOW,REMOVING	1	1	1					
7	1	1N1710-32600	CLAMP 8X70	1	1	1					
8	1	22117-060000	WASHER 6	2	2	2					
9	1	22117-100000	WASHER 10	1	1	1					
10	1	22417-200100	COTTER PIN 2.0X10	2	2	2					
11	1	24550-012150	BUSH 12X15	4	4	4					
12	1	1J3999-06000	BEARING 626-2NSL	1	1	1					
13	1	1N3330-31350	ARMCLUTCH LOCK SHAFT	1	1	1					
14	1	1N3300-31400	CATCH,LOCK CLAW	1	1	1					
15	1	1N3021-31451	CLAW,CLUTCH LOCK	1	1	1					
16	1	1N3021-31480	SPRING,LOCK CLAW	1	1	1					
17	1	1N3300-31500	GUIDE,LOCK CLAW	1	1	1					
18	1	1N3021-31580	BUSH 10X15,FLANGED	1	1	1					
19	1	1N3370-31700	SEAT, LOCK CLAW	1	1	1					
20	1	1C1011-45020	BUSH 6X8X10	1	1	1					
21	1	22117-060000	WASHER 6	1	1	1					
22	1	22117-060000	WASHER 6	2	2	2					
23	1	22117-060000	WASHER 6	1	1	1					
24	1	22117-080000	WASHER 8	2	2	2					
25	1	22351-050020	SPRING PIN 5X20	1	1	1					
26	1	22417-160100	COTTER PIN	1	1	1					
27	1	22417-160100	COTTER PIN	1	1	1					
28	1	22417-200160	COTTER PIN 2.0X16	2	2	2					
29	1	26016-080164	BOLT M 8X 16	1	1	1					
30	1	26347-060002	U-NUT M 6	1	1	1					

Fig.8. CHANGE LEVER



0CNP4-G09100 8. CHANGE LEVER

(A)=YSR90H
(B)=YSR90H-S
(C)=YSR100H-S

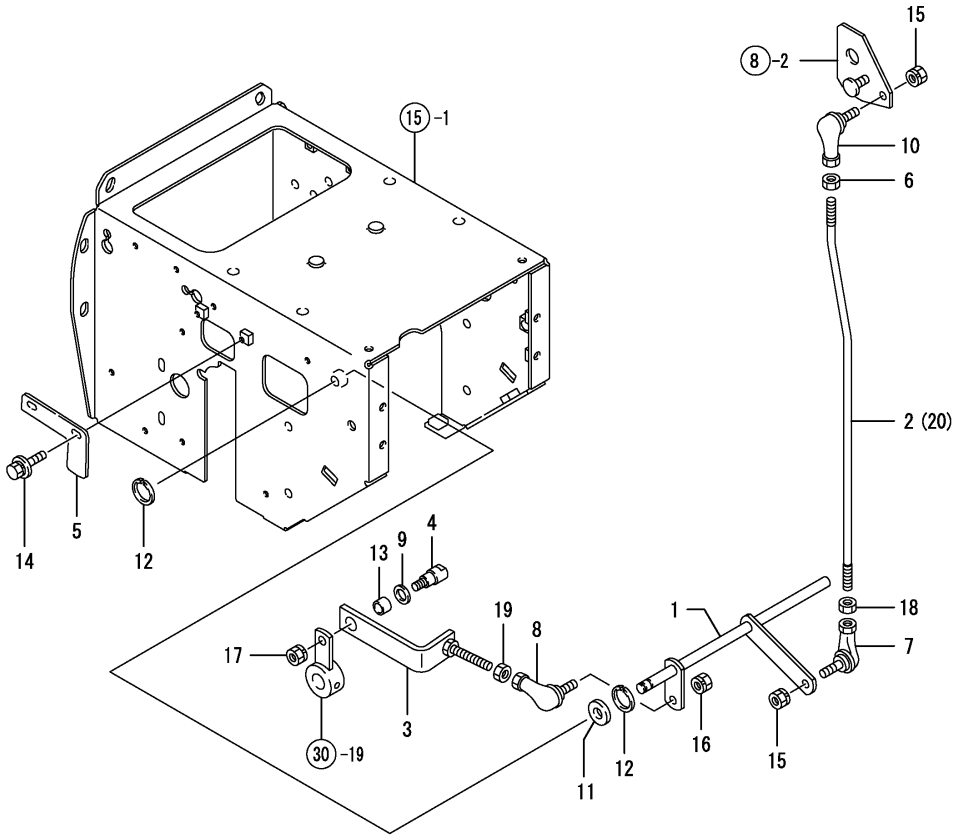
(D)=
(E)=
(F)=

REF.	LEV.	PARTS NO.	DESCRIPTION	QTY						I	R
				(A)	(B)	(C)	(D)	(E)	(F)		
1	1	1N3360-32000	CHANGE LEVER	1	1	1					
2	1	1N3335-32050	ARM, CHANGE	1	1	1					
3	1	1N3330-32090	FRICTION PLATE	2	2	2					
4	1	1N3335-32090	SPRING,CHANGE LEVER	1	1	1					
5	1	1N1723-32350	LOCK WASHER	1	1	1					
6	1	1C6320-64680	SPRING 14,BELLEVILLE	2	2	2					
7	1	1E6570-64760	GRIP 12,CHANGE LEVER	1	1	1					
8	1	24550-014100	BUSH 14X10	1	1	1					
9	1	26051-080002	NUT M 8	3	3	3					
10	1	26357-140002	U-NUT M14	1	1	1					
11	1	1N3370-32100	FULCRUM, LEVER	1	1	1					
12	1	1N3370-32400	CATCH, FULCRUM	1	1	1					
13	1	26016-080164	BOLT M 8X 16	1	1	1					
14	1	26018-060162	BOLT M6X16	1	1	1					
15	1	26018-080164	BOLT M 8X 16	1	1	1					

Fig.9. CHANGE ROD

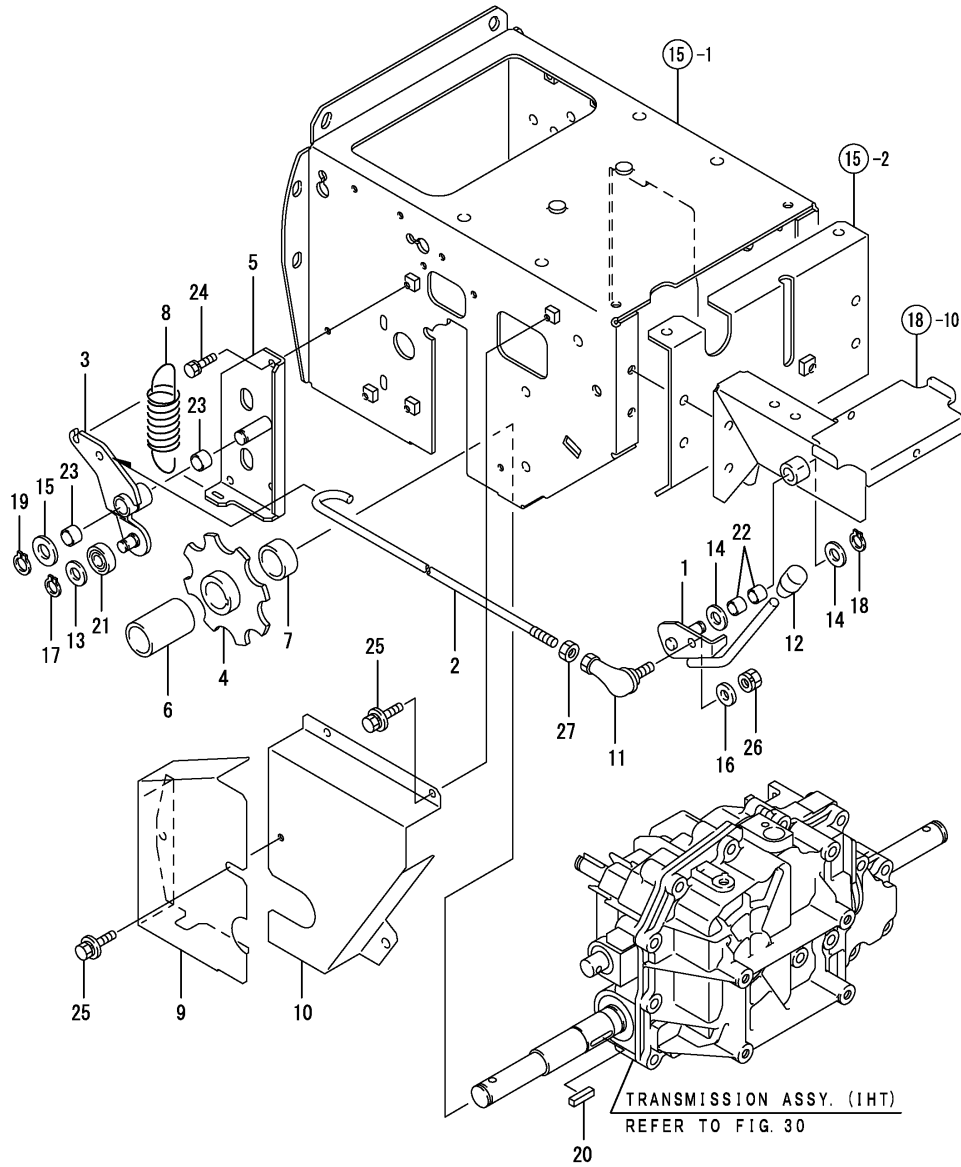
(A)=YSR90H
(B)=YSR90H-S
(C)=YSR100H-S

(D)=
(E)=
(F)=



REF.	LEV.	PARTS NO.	DESCRIPTION	QTY						I	R
				(A)	(B)	(C)	(D)	(E)	(F)		
1	1	1N3335-32200	CHANG COUNTER	1	1	1					
2	1	1N3370-32200	ROD,CHANGE LEVER	1	1						
3	1	1N3370-32300	PLATE, CHANGE	1	1	1					
4	1	1N3335-32350	PIN,CHANGE STOPPER	1	1	1					
5	1	1N3021-32381	STOPPER,CHANGE	1	1	1					
6	1	1N1570-32950	NUT 8	1	1	1					
7	1	1E4760-43090	BALL RBL8,LINK	1	1	1					
8	1	1E4760-43090	BALL RBL8,LINK	1	1	1					
9	1	1S6240-61430	LINER 12X19X1	1	1	1					
10	1	1E6740-64200	BALL BL8DL, LINK	1	1	1					
11	1	22137-100000	WASHER 10,POLISHED	1	1	1					
12	1	22292-000100	CIRCLIP S10	2	2	2					
13	1	24550-012060	BUSH 12X 6	1	1	1					
14	1	26018-060124	BOLT M 6X 12	2	2	2					
15	1	26051-080002	NUT M 8	2	2	2					
16	1	26051-080002	NUT M 8	1	1	1					
17	1	26051-080002	NUT M 8	1	1	1					
18	1	26717-080002	NUT 8	1	1	1					
19	1	26717-080002	NUT 8	1	1	1					
20	1	1N3415-32200	ROD,CHANGE LEVER								1

Fig.10. BRAKE



(A)=YSR90H
(B)=YSR90H-S
(C)=YSR100H-S

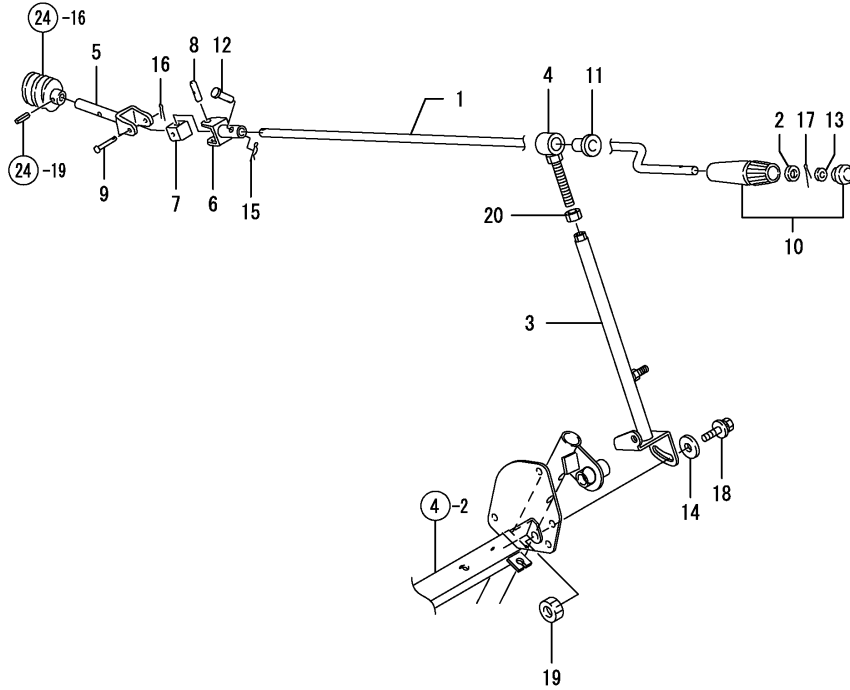
(D)=
(E)=
(F)=

REF.	LEV.	PARTS NO.	DESCRIPTION	QTY						I	R
				(A)	(B)	(C)	(D)	(E)	(F)		
1	1	1N3370-33001	LEVER,PARKING LEVER	1	1	1					
2	1	1N3370-33080	BAR, CONNECTING	1	1	1					
3	1	1N3370-33100	ARM ASSY, BRAKE ARM	1	1	1					
4	1	1N3370-33200	PLATE ASSY, BRAKE	1	1	1					
5	1	1N3370-33300	BASE ASSY, BRAKE	1	1	1					
6	1	1N3370-33400	COLLAR, BRAKE 50	1	1	1					
7	1	1N3370-33410	COLLAR, BRAKE 15	1	1	1					
8	1	1N3370-33450	SPRING,PARKING BRAKE	1	1	1					
9	1	1N3370-33500	COVER, FRONT	1	1	1					
10	1	1N3370-33550	COVER, REAR	1	1	1					
11	1	1E4760-43090	BALL RBL8,LINK	1	1	1					
12	1	1E5100-51430	KNOB CLUTCH(RED)	1	1	1					
13	1	22117-100000	WASHER 10	1	1	1					
14	1	22117-100000	WASHER 10	2	2	2					
15	1	22117-120000	WASHER 12	1	1	1					
16	1	22137-080000	WASHER 8, POLISHED	1	1	1					
17	1	22242-000100	CIRCLIP 10	1	1	1					
18	1	22242-000100	CIRCLIP 10	1	1	1					
19	1	22242-000120	CIRCLIP 12	1	1	1					
20	1	22550-050200	KEY 5X20	1	1	1					
21	1	24104-060004	BALL BEARING	1	1	1					
22	1	24550-010100	BUSH 10X10,DRY	2	2	2					
23	1	24550-012100	BUSH 12X10	2	2	2					
24	1	26016-060122	BOLT M 6X 12	3	3	3					
25	1	26018-060124	BOLT M 6X 12	5	5	5					
26	1	26051-080002	NUT M 8	1	1	1					
27	1	26717-080002	NUT 8	1	1	1					

Fig.13. CHUTE HANDLE

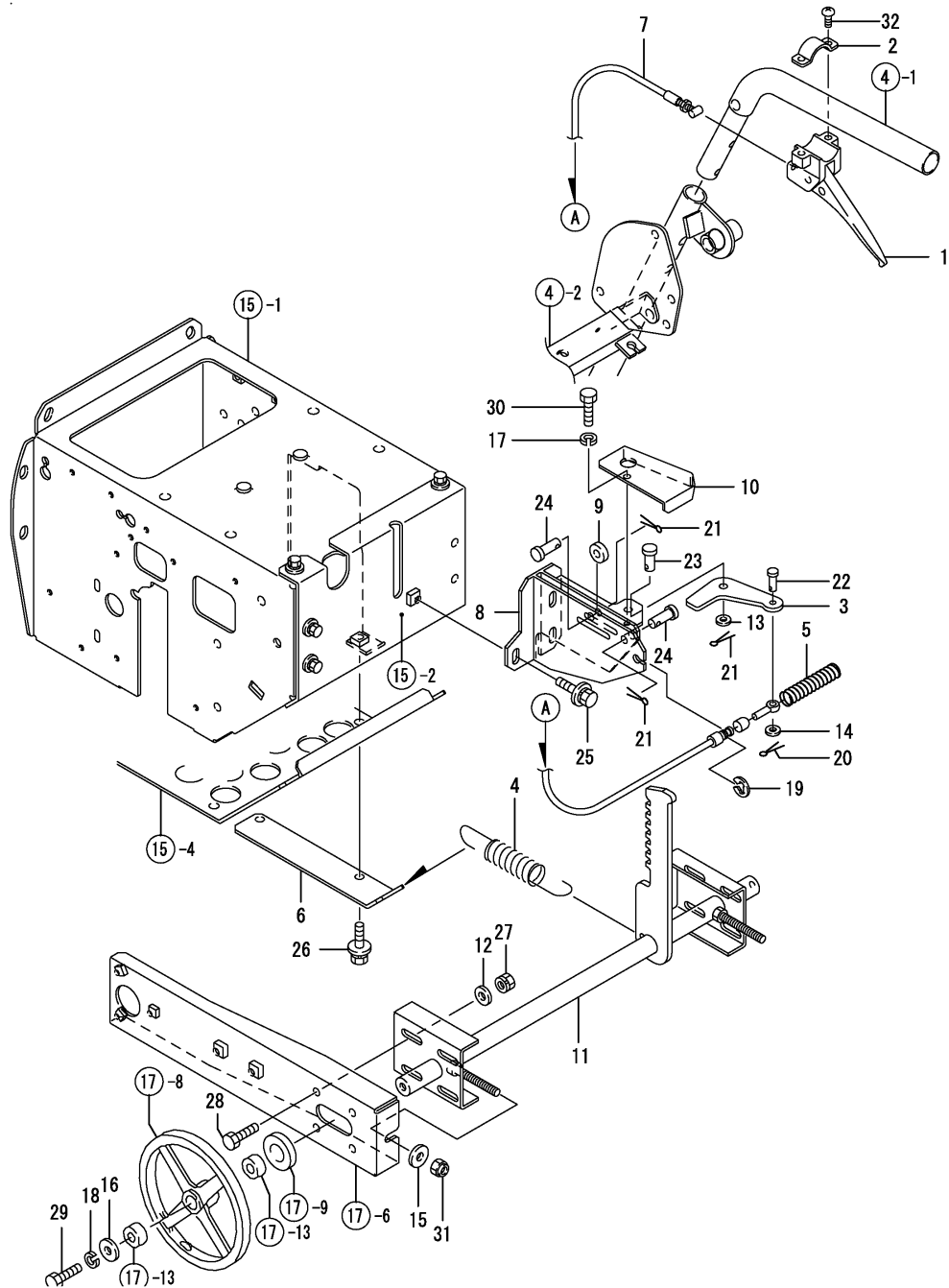
(A)=YSR90H
(B)=YSR90H-S
(C)=YSR100H-S

(D)=
(E)=
(F)=



REF.	LEV.	PARTS NO.	DESCRIPTION	Q'TY						I	R
				(A)	(B)	(C)	(D)	(E)	(F)		
1	1	1N3390-34350	HANDLE, CHUTE	1	1	1					
2	1	1N3021-34390	SPACER 10X14X1	1	1	1					
3	1	1N3390-34500	STAY,CHUTE HANDLE	1	1	1					
4	1	1N3390-34530	SUPPORT,HANDLE	1	1	1					
5	1	1N3390-34600	ROD,CONNECTION	1	1	1					
6	1	1N3330-34651	JOINT, CONNECTING	1	1	1					
7	1	1N3330-34700	JOINT FULCRUM	1	1	1					
8	1	1N3021-34710	JOINT FULCRUM,PIN 8	1	1	1					
9	1	1N3021-34720	RIVET 4X27.5	1	1	1					
10	1	1N1711-35520	GRIP,SHOOT	1	1	1					
11	1	1F5300-43300	BUSH 1015	1	1	1					
12	1	1N3260-73250	RIVET 4X19.5	1	1	1					
13	1	22137-060000	WASHER 6, POLISHED	1	1	1					
14	1	22137-080000	WASHER 8, POLISHED	1	1	1					
15	1	22372-040000	SNAP PIN 4	1	1	1					
16	1	22417-200100	COTTER PIN 2.0X10	1	1	1					
17	1	22417-200160	COTTER PIN 2.0X16	1	1	1					
18	1	26018-080204	BOLT M 8X 20	1	1	1					
19	1	26717-080002	NUT 8	1	1	1					
20	1	26717-080002	NUT 8	1	1	1					

Fig.14. LIFTING

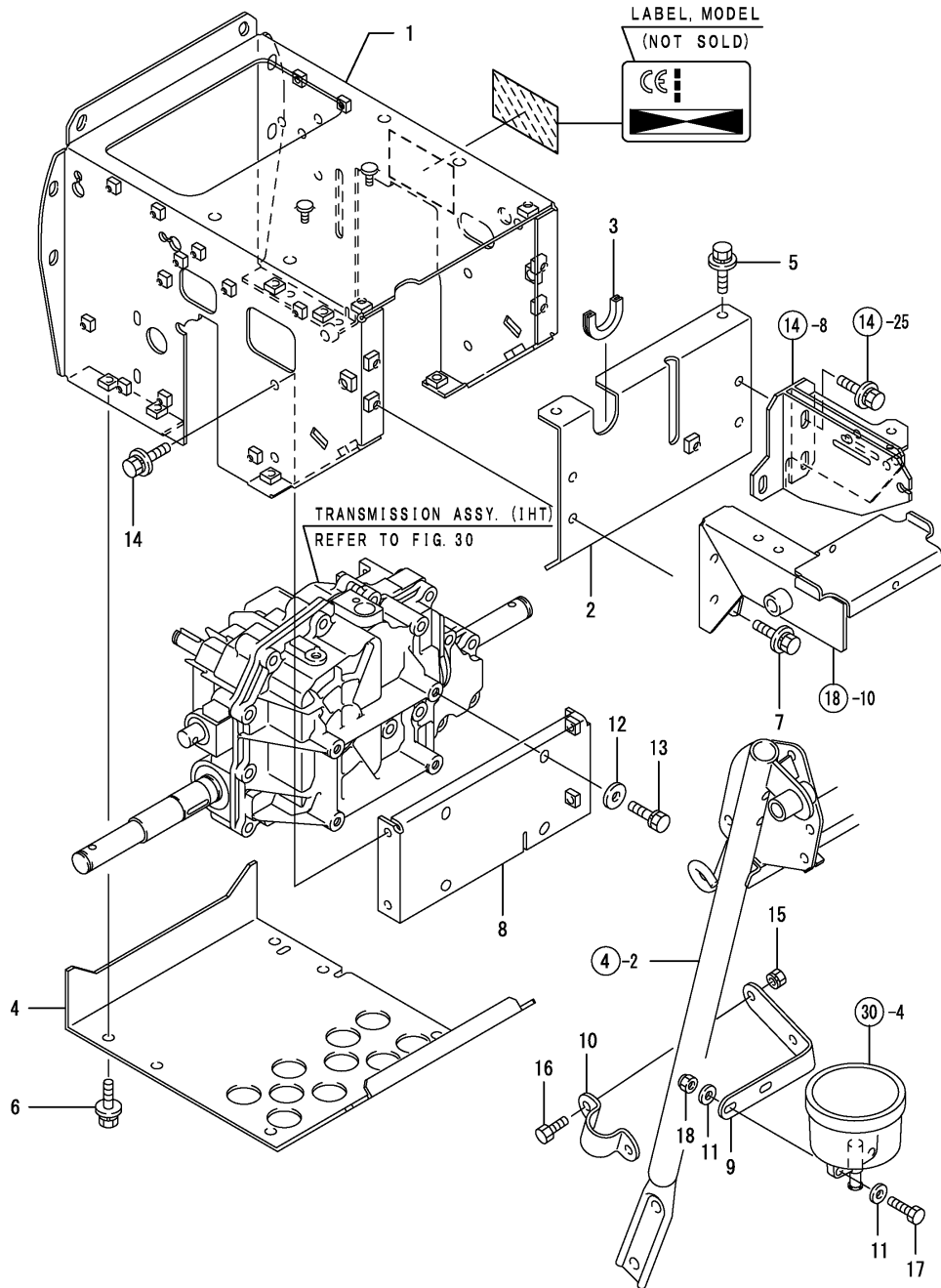


(A)=YSR90H
(B)=YSR90H-S
(C)=YSR100H-S

(D)=
(E)=
(F)=

REF.	LEV.	PARTS NO.	DESCRIPTION	QTY						I	R
				(A)	(B)	(C)	(D)	(E)	(F)		
1	1	1N3390-35000	LEVER,LIFT	1	1	1					
2	1	1N3390-35060	PLATE	1	1	1					
3	1	1N3390-35100	PLATE,STOPPER	1	1	1					
4	1	1N3360-35150	LIFT SPRING	1	1	1					
5	1	1N3390-35150	SPRING,15X70	1	1	1					
6	1	1N3370-35160	STAY, LIFT SPRING	1	1	1					
7	1	1N3390-35250	WIRE,LIFTING	1	1	1					
8	1	1N3405-35300	SUPPORT, LIFTING	1	1	1					
9	1	1N3390-35400	COLLER,GUIDE	1	1	1					
10	1	1N3390-35450	COVER,LIFT	1	1	1					
11	1	1N3400-35500	SHAFT,IDLER	1	1	1					
12	1	22137-080000	WASHER 8, POLISHED	8	8	8					
13	1	22137-080000	WASHER 8, POLISHED	1	1	1					
14	1	22157-060000	WASHER 6	1	1	1					
15	1	22157-080000	WASHER 8	2	2	2					
16	1	22157-080000	WASHER 8	2	2	2					
17	1	22217-060000	SPRING WASHER 6	1	1	1					
18	1	22217-080000	SPRING WASHER 8	2	2	2					
19	1	22272-000060	CIRCLIP E- 6	1	1	1					
20	1	22417-160100	COTTER PIN	1	1	1					
21	1	22417-200160	COTTER PIN 2.0X16	3	3	3					
22	1	22487-060160	PIN 6X 16	1	1	1					
23	1	22487-080120	PIN 8X 12	1	1	1					
24	1	22487-080160	PIN 8X 16	2	2	2					
25	1	26018-080202	BOLT M 8X 20	3	3	3					
26	1	26018-080204	BOLT M 8X 20	2	2	2					
27	1	26051-080002	NUT M 8	8	8	8					
28	1	26116-080202	BOLT M 8X 20 PLATED	8	8	8					
29	1	26116-080252	BOLT M 8X 25 PLATED	2	2	2					
30	1	26117-060122	BOLT M 6X 12 PLATED	1	1	1					
31	1	26347-080002	U-NUT M 8	2	2	2					
32	1	26557-060252	SCREW M 6X 25	2	2	2					

Fig.15. CHASSIS FRAME



OCNP4-G09100 15. CHASSIS FRAME

(A)=YSR90H
(B)=YSR90H-S
(C)=YSR100H-S

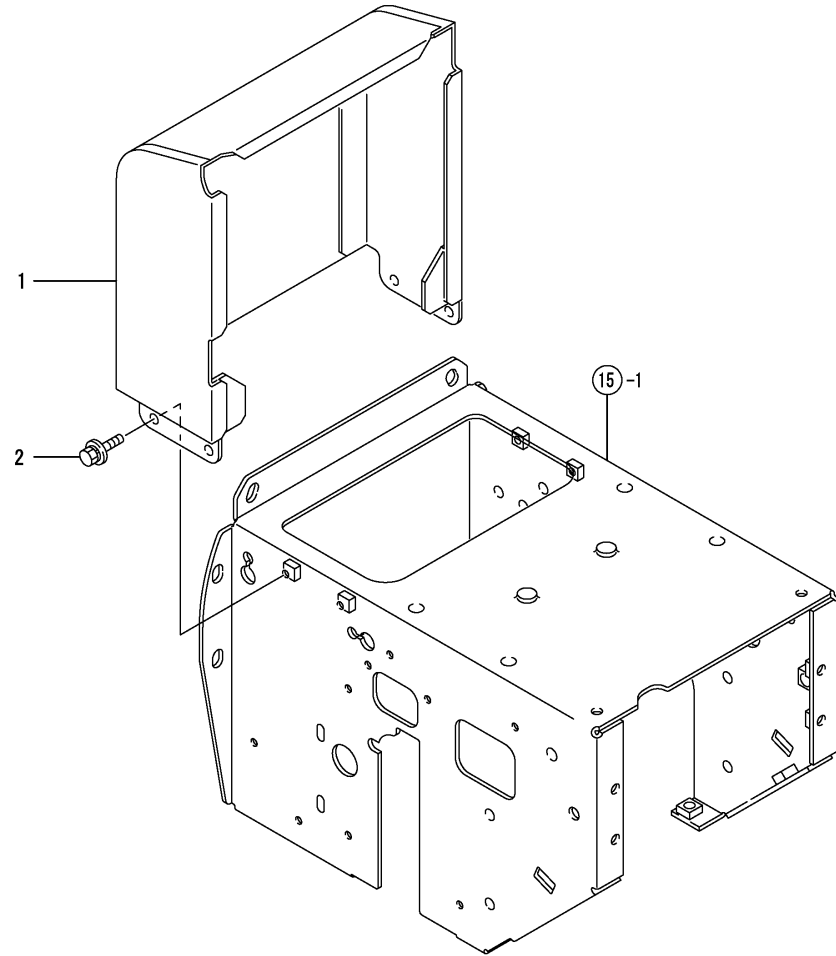
(D)=
(E)=
(F)=

REF.	LEV.	PARTS NO.	DESCRIPTION	QTY						I	R
				(A)	(B)	(C)	(D)	(E)	(F)		
1	1	1N3415-36010	CHASSIS	1	1	1					
2	1	1N3405-36100	CHASSIS	1	1	1					
3	1	1N3021-36130	GROMMET	1	1	1					
4	1	1N3370-36200	CHASSIS,BOTTOM	1	1	1					
5	1	26018-080164	BOLT M 8X 16	2	2	2					
6	1	26018-080164	BOLT M 8X 16	6	6	6					
7	1	26018-080204	BOLT M 8X 20	2	2	2					
8	1	1N3021-36401	BRACKET,TRANSM.MTG.	1	1	1					
9	1	1N3405-36600	STAY,TANK	1	1	1					
10	1	1N3360-36650	MOUNT, STAY	1	1	1					
11	1	22137-060000	WASHER 6, POLISHED	4	4	4					
12	1	22157-080000	WASHER 8	4	4	4					
13	1	26016-080202	BOLT M 8X 20	4	4	4					
14	1	26018-080202	BOLT M 8X 20	4	4	4					
15	1	26051-060002	NUT M 6	2	2	2					
16	1	26117-060162	BOLT M 6X 16 PLATED	2	2	2					
17	1	26117-060252	BOLT M 6X 25 PLATED	2	2	2					
18	1	26347-060002	U-NUT M 6	2	2	2					

Fig.16. BELT COVER

(A)=YSR90H
 (B)=YSR90H-S
 (C)=YSR100H-S

(D)=
 (E)=
 (F)=



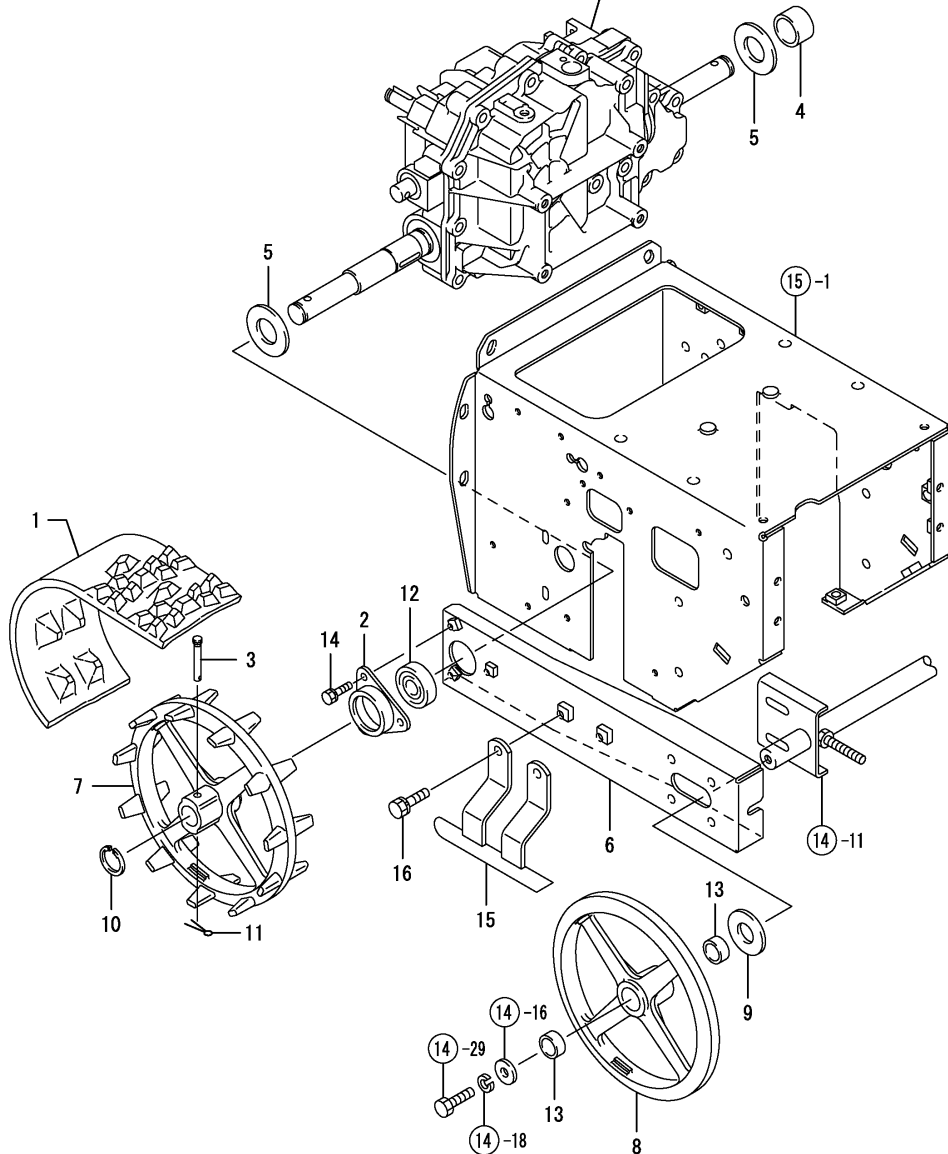
REF.	LEV.	PARTS NO.	DESCRIPTION	Q'TY						I	R
				(A)	(B)	(C)	(D)	(E)	(F)		
1	1	7N3405-37010	PL.ASSY,BELT COVER	1	1	1					
2	1	26018-060124	BOLT M 6X 12	4	4	4					

Fig.17. CRAWLER

(A)=YSR90H
(B)=YSR90H-S
(C)=YSR100H-S

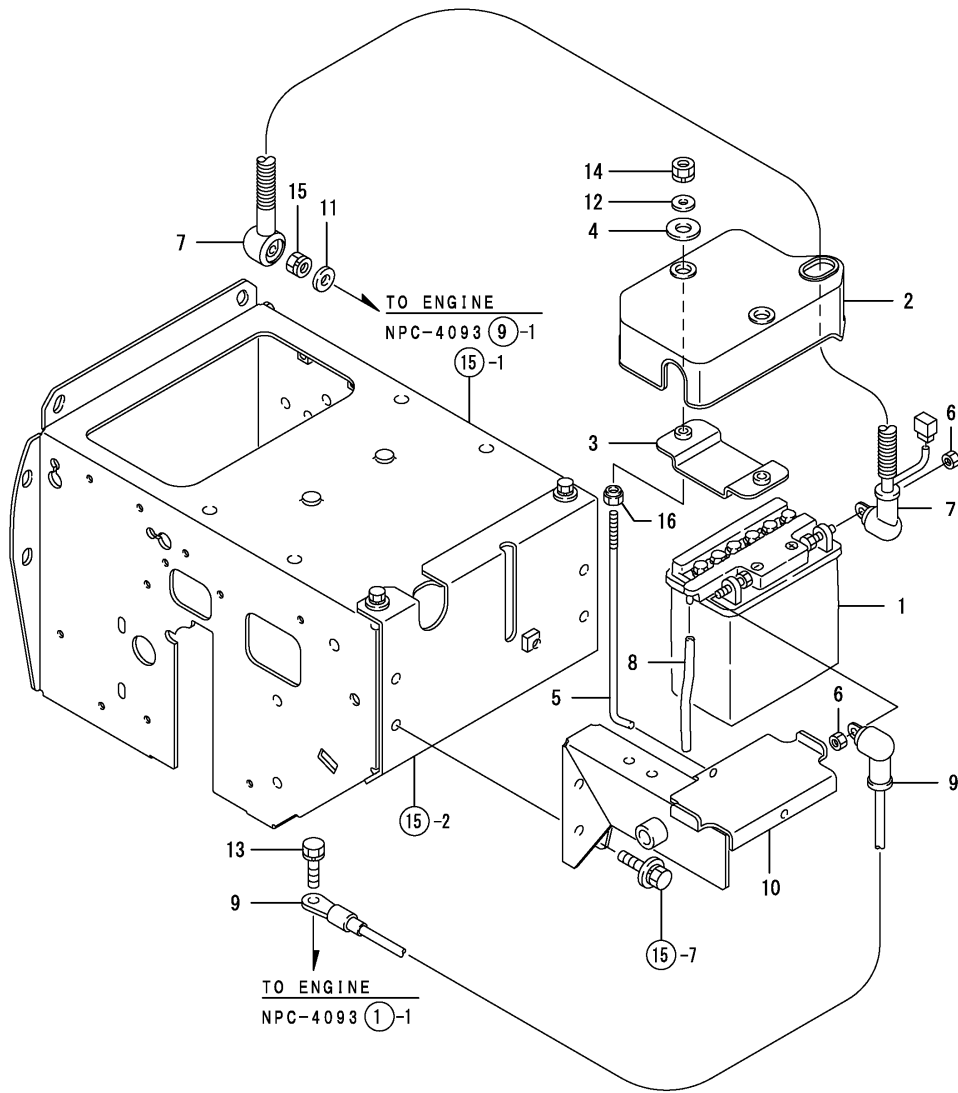
(D)=
(E)=
(F)=

TRANSMISSION ASSY. (IHT)
REFER TO FIG. 30



REF.	LEV.	PARTS NO.	DESCRIPTION	QTY						I	R
				(A)	(B)	(C)	(D)	(E)	(F)		
1	1	1N3360-38000	CRAWLER	2	2	2					
2	1	1N3300-25100	JOINT 6004	2	2	2					
3	1	1N3021-38101	PIN,AXLE	2	2	2					
4	1	1N3021-38150	COLLAR 16X32X19	1	1	1					
5	1	1N3021-38170	WASHER,SEAL PROTECT.	2	2	2					
6	1	1N3390-38200	FRAME,CRAWLER	2	2	2					
7	1	1N3021-38500	SPROCKET 11	2	2	2					
8	1	1N3021-38600	WHEEL	2	2	2					
9	1	22137-200000	WASHER 20,POLISHED	2	2	2					
10	1	22292-000200	CIRCLIP S-20	2	2	2					
11	1	22417-200120	COTTER PIN 2.0X12	2	2	2					
12	1	24104-060044	BALL BEARING	2	2	2					
13	1	24550-020100	BUSH	4	4	4					
14	1	26016-060162	BOLT M 6X 16	6	6	6					
15	1	1N3370-38500	GUIDE,CRAWLER	2	2	2					
16	1	26016-080202	BOLT M 8X 20	4	4	4					

Fig.18. BATTERY



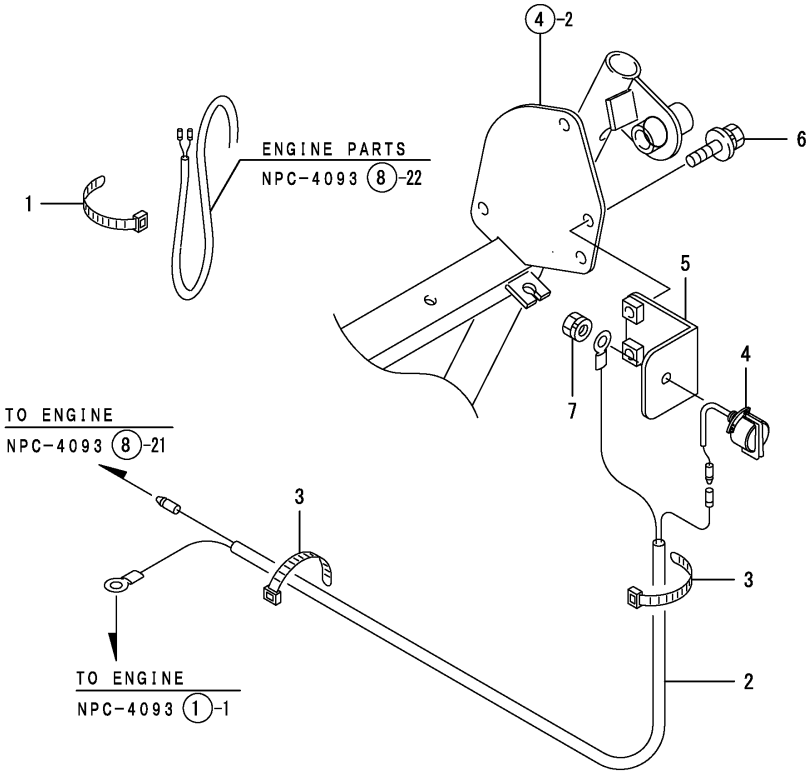
OCNP4-G09100 18. BATTERY

(A)=YSR90H
(B)=YSR90H-S
(C)=YSR100H-S

(D)=
(E)=
(F)=

REF.	LEV.	PARTS NO.	DESCRIPTION	QTY						I	R
				(A)	(B)	(C)	(D)	(E)	(F)		
1	1	1N3300-51010	BATTERY YB12AL-A		1	1					
2	1	1N3360-51100	COVER,BATTERY		1	1					
3	1	1N3360-51150	PLATE,KEEP,BATTERY		1	1					
4	1	1N3360-51170	RUBBER,KEEP,BATTERY		2	2					
5	1	1N3360-51200	SHAFT,KEEP,BATTERY		2	2					
6	1	1N3360-51210	NUT 6X7		2	2					
7	1	1N3370-51300	CABLE,BATTERY POSIT.		1	1					
8	1	1N1710-51350	PIPE,VINYL		1	1					
9	1	1N3370-51350	CABLE,BATTERY NEG.		1	1					
10	1	1N3370-51500	REST ASSY, BATTERY	1	1	1					
11	1	22117-080000	WASHER 8		1	1					
12	1	22157-060000	WASHER 6		2	2					
13	1	26016-080164	BOLT M 8X 16		1	1					
14	1	26051-060002	NUT M 6		2	2					
15	1	26051-080002	NUT M 8		1	1					
16	1	26347-060002	U-NUT M 6		2	2					

Fig.19. HARNESS & SWITCH



0CNP4-G09100 19. HARNESS & SWITCH

(A)=YSR90H
(B)=YSR90H-S
(C)=YSR100H-S

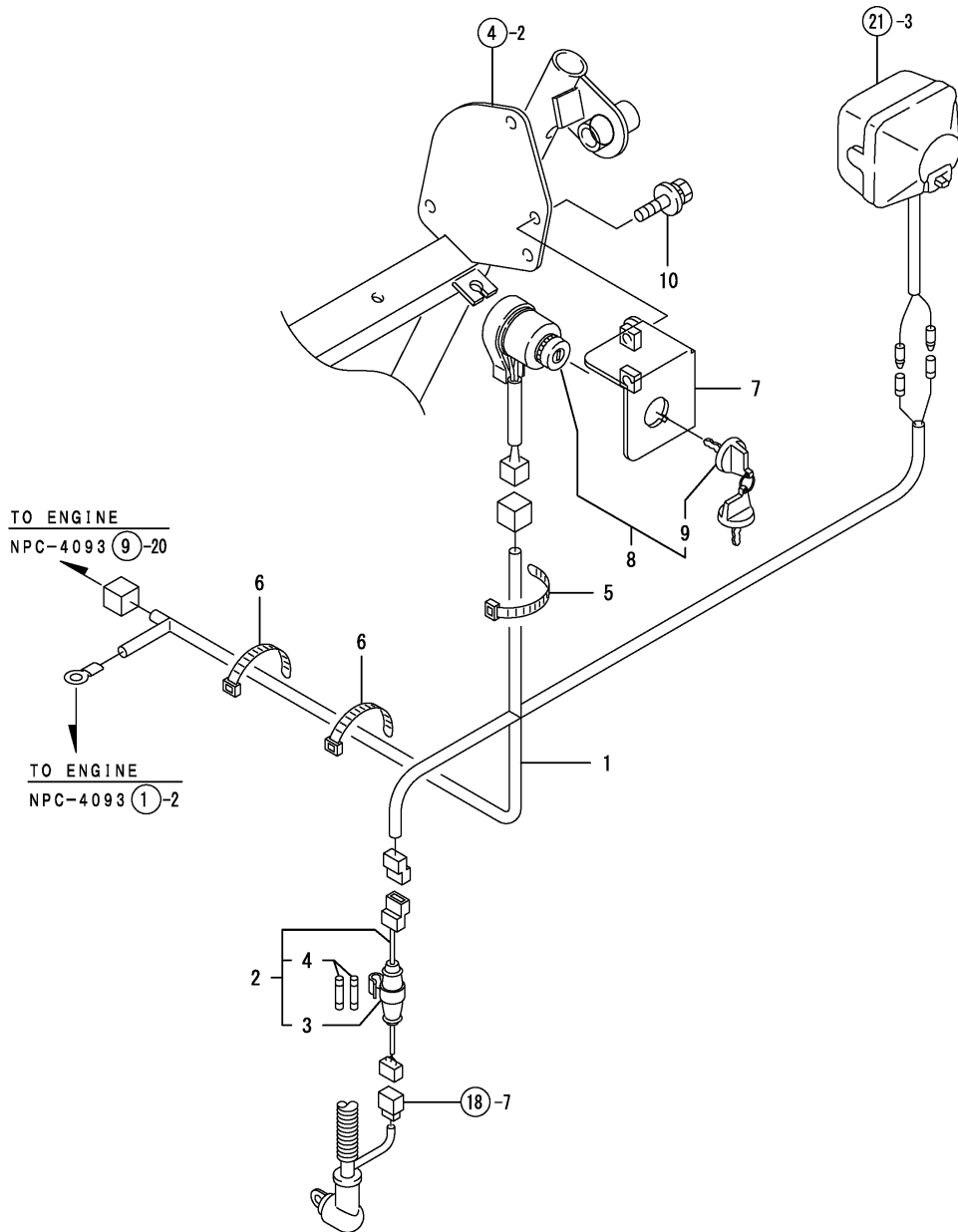
(D)=
(E)=
(F)=

REF.	LEV.	PARTS NO.	DESCRIPTION	Q'TY						I	R
				(A)	(B)	(C)	(D)	(E)	(F)		
1	1	1J3999-07000	BAND 100B	1							
2	1	1N3300-51400	HARNESS (T	1							
3	1	1E6102-84970	BAND 140,WIRE LOCK	2							
4	1	1A1470-40900	SWITCH,STOP	1							
5	1	1N3300-51451	SEAT,SWICH T	1							
6	1	26018-080164	BOLT M 8X 16	2							
7	1	26051-080002	NUT M 8	1							

Fig.20. HARNESS & SWITCH

(A)=YSR90H
 (B)=YSR90H-S
 (C)=YSR100H-S

(D)=
 (E)=
 (F)=

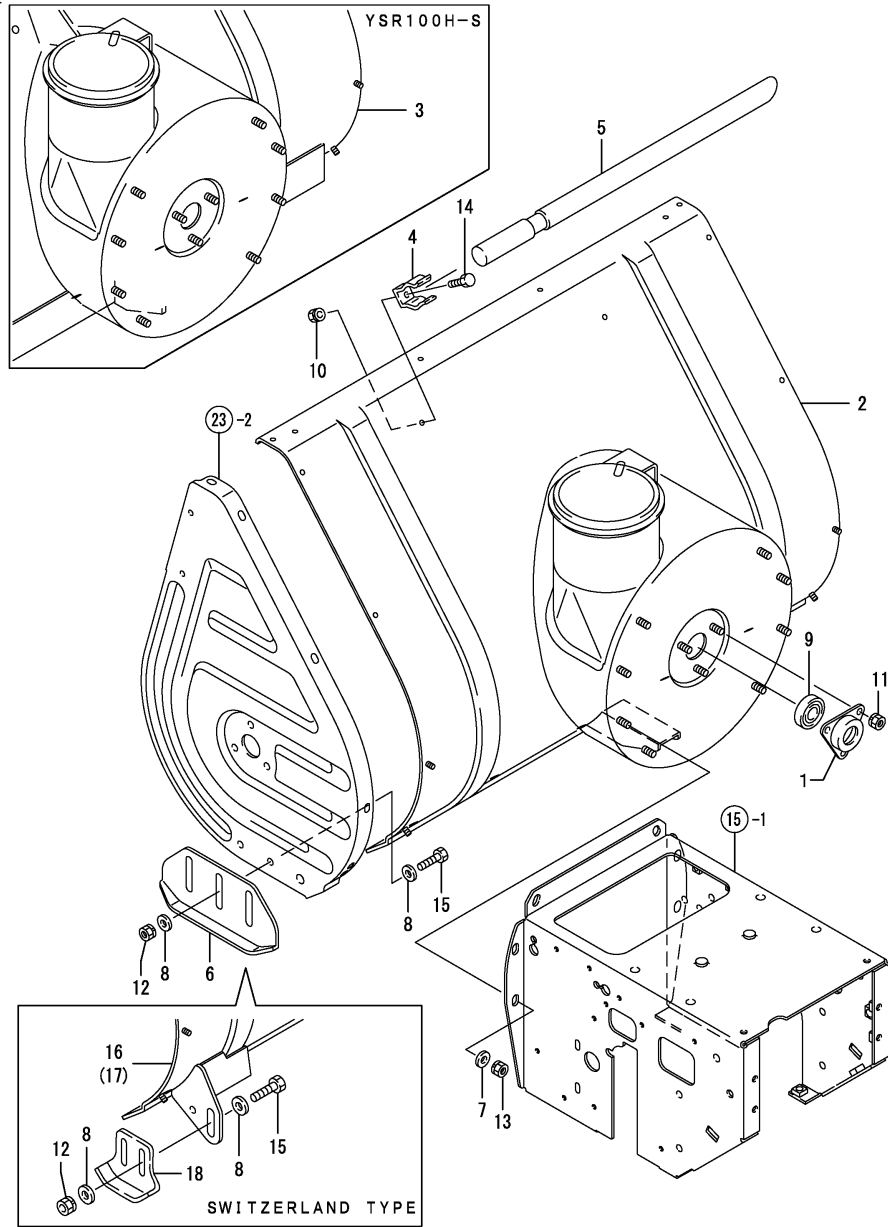


REF.	LEV.	PARTS NO.	DESCRIPTION	QTY						I	R	
				(A)	(B)	(C)	(D)	(E)	(F)			
1	1	1N3405-51000	HARNESS		1	1						
2	1	1N3021-51550	HOLDER ASSY.,FUSE		1	1						
3	2	1N3021-51560	HOLDER, FUSE		1	1						
4	2	29411-200000	FUSE (20A),CARTRIDGE		2	2						
5	1	1E6102-84960	BAND 250,WIRE LOCK		2	2						
6	1	1E6102-84970	BAND 140,WIRE LOCK		3	3						
7	1	1N3300-51552	SEAT, SWITCH TS		1	1						
8	1	1N3021-52300	SWITCH ASSY.,KEY		1	1						
9	2	160797-77270	KEY, REVERSE		1	1						
10	1	26018-080164	BOLT M 8X 16		2	2						

Fig.22. SNOW REMOVING FRAME

(A)=YSR90H
(B)=YSR90H-S
(C)=YSR100H-S

(D)=
(E)=
(F)=



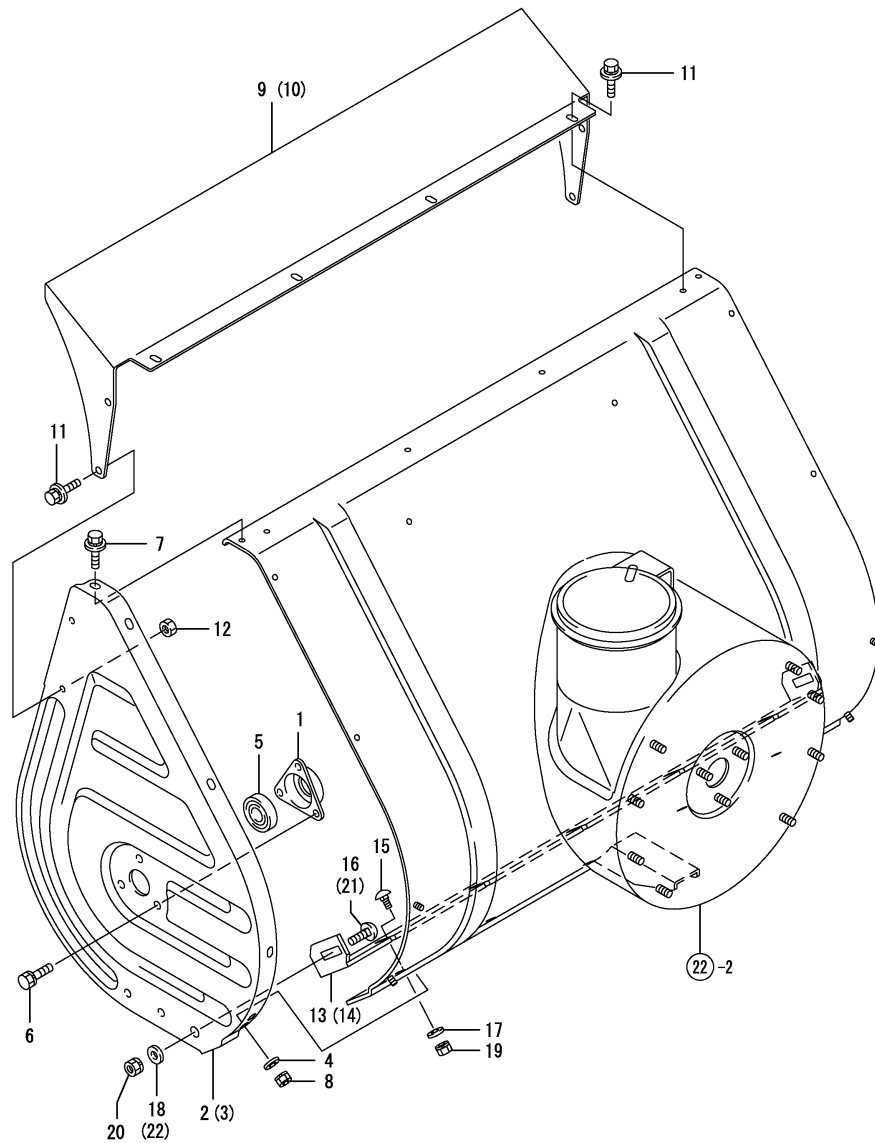
REF.	LEV.	PARTS NO.	DESCRIPTION	QTY						I	R
				(A)	(B)	(C)	(D)	(E)	(F)		
1	1	1N1570-38210	BEARING 6203B	1	1	1					
2	1	7N3405-71000	PL.ASSY,WORK FRAME	1	1						
3	1	7N3415-71000	PL.ASSY,WORK FRAME			1					
4	1	1N1710-71062	STOPPER	2	2	2					
5	1	1N1710-71071	ROD,SNOW SHOVELING	1	1	1					
I	5-1	1	1N1710-71072	ROD,SNOW SHOVELING	1	1	1				R
		(A=FXXXXXX)	(B=FXXXXXX)	(C=FXXXXXX)							
6	1	1N3300-71401	SHOE	2	2	2					2
7	1	22137-080000	WASHER 8, POLISHED	6	6	6					
8	1	22137-080000	WASHER 8, POLISHED	8	8	8					
9	1	24104-062034	BALL BEARING	1	1	1					
10	1	26051-060002	NUT M 6	2	2	2					
11	1	26051-080002	NUT M 8	3	3	3					
12	1	26051-080002	NUT M 8	4	4	4					
13	1	26051-080002	NUT M 8	6	6	6					
14	1	26117-060122	BOLT M 6X 12 PLATED	2	2	2					
15	1	26117-080202	BOLT M 8X 20 PLATED	4	4	4					
I	16	1	7N3405-71010	PL.ASSY,WORK FRAME	1	1					1
I	17	1	7N3415-71010	PL.ASSY,WORK FRAME			1				1
I	18	1	1N1711-71100-1	GUIDE	2	2	2				1

Remarks
(1) FOR TYPE SWITZERLAND
(2) NOT USED FOR SWITZERLAND TYPE

Fig.23. AUGER COVER

(A)=YSR90H
 (B)=YSR90H-S
 (C)=YSR100H-S

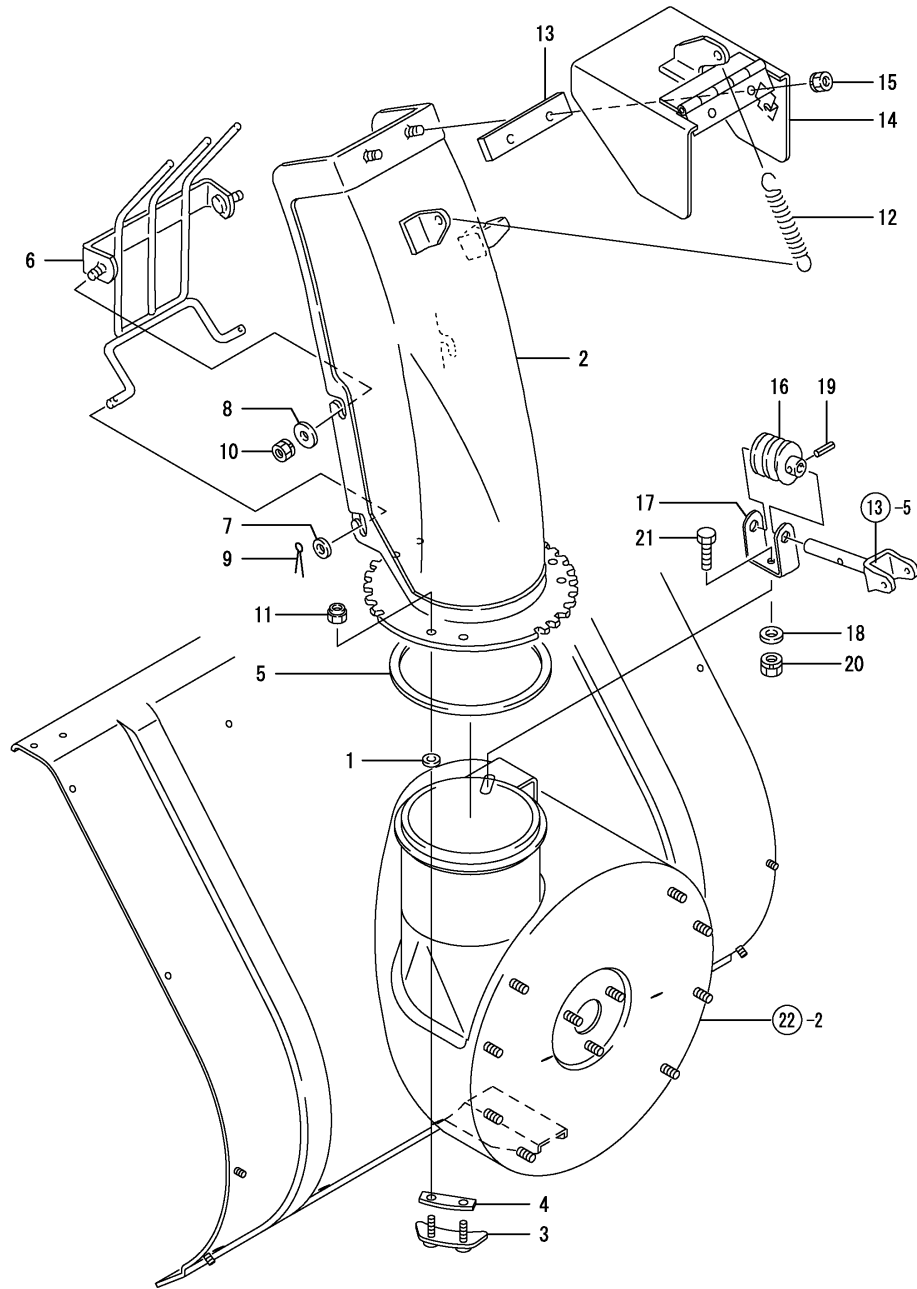
(D)=
 (E)=
 (F)=



REF.	LEV.	PARTS NO.	DESCRIPTION	QTY						I	R
				(A)	(B)	(C)	(D)	(E)	(F)		
1	1	1N1570-38200	BEARING 6203C	2	2	2					
2	1	1N3370-71300	PLATE L,AUGER SIDE	1	1	1					
3	1	1N3370-71350	PLATE R,AUGER SIDE	1	1	1					
4	1	22137-060000	WASHER 6, POLISHED	4	4	4					
5	1	24104-062034	BALL BEARING	2	2	2					
6	1	26016-080164	BOLT M 8X 16	6	6	6					
7	1	26018-060124	BOLT M 6X 12	6	6	6					
8	1	26051-060002	NUT M 6	4	4	4					
9	1	1N3269-71500	COVER 710,AUGER CASE	1	1						
10	1	1N3021-71500	COVER,AUGER CASE							1	
11	1	26018-060124	BOLT M 6X 12	8	8	8					
12	1	26717-060002	NUT M 6	4	4	4					
13	1	1N3300-71301	PLATE,BOTTOM(710	1	1						
14	1	1N3020-71301	PLATE,BOTTOM(800							1	
15	1	1N3300-71320	BOLT	5	5	5					
16	1	1N3300-71330	BOLT	2	2	2					2
17	1	22137-060000	WASHER 6, POLISHED	5	5	5					
18	1	22157-080000	WASHER 8	2	2	2					2
19	1	26051-060002	NUT M 6	5	5	5					
20	1	26051-080002	NUT M 8	2	2	2					
I	21	1N3020-71320	BOLT, 8X20	2	2	2					1
I	22	1	22137-080000	WASHER 8, POLISHED	2	2	2				1

Remarks
 (1) FOR TYPE SWITZERLAND
 (2) NOT USED FOR SWITZERLAND TYPE

Fig.24. CHUTE

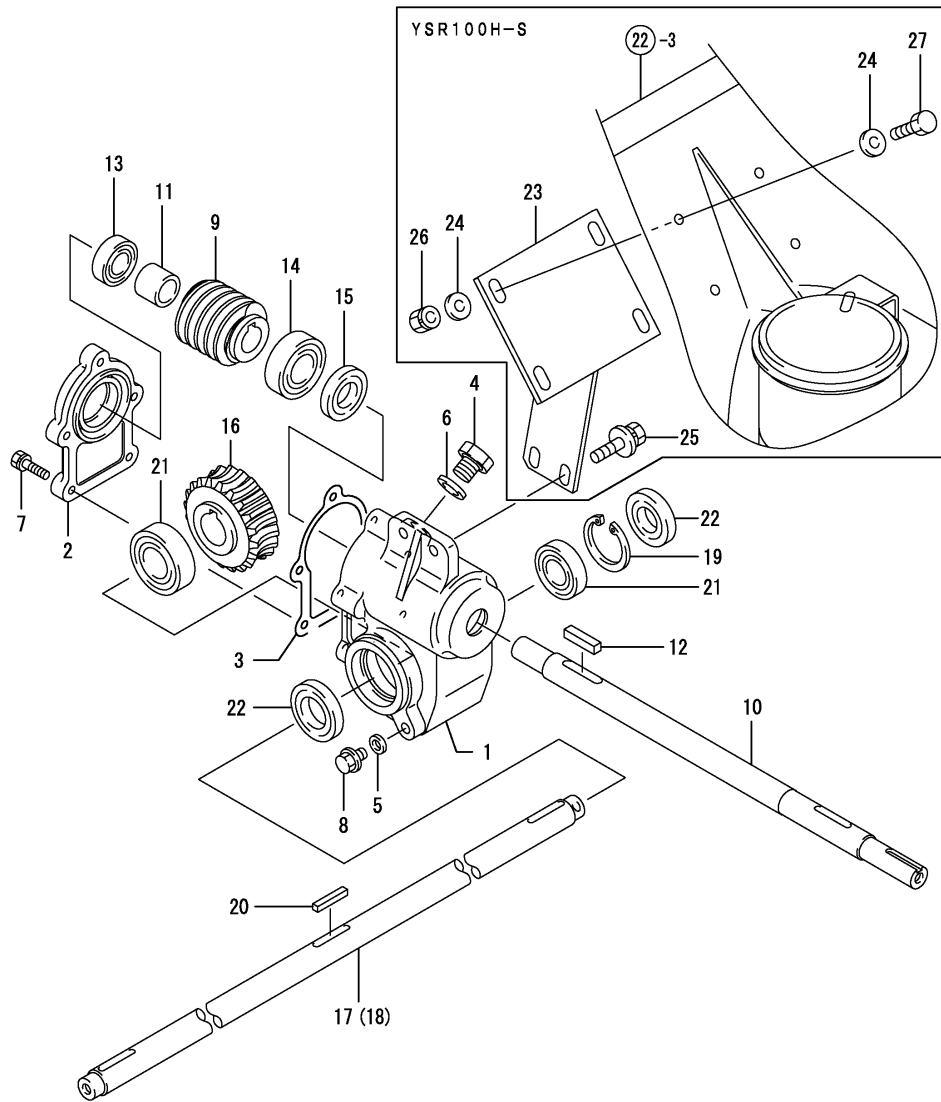


(A)=YSR90H
(B)=YSR90H-S
(C)=YSR100H-S

(D)=
(E)=
(F)=

REF.	LEV.	PARTS NO.	DESCRIPTION	QTY						I	R
				(A)	(B)	(C)	(D)	(E)	(F)		
1	1	1J3999-02160	WASHER	6	6	6					
2	1	7N3390-73000	PL.ASSY,CHUTE	1	1	1					
3	1	1N3021-73201	FIXTURE A,SHOOTER	3	3	3					
4	1	1N1711-73240	SPACER	3	3	3					
5	1	1N1711-73280	PLATE,FLOOR	1	1	1					
6	1	1N1960-73502	GUARD	1	1	1					
7	1	22137-060000	WASHER 6, POLISHED	2	2	2					
8	1	22157-060000	WASHER 6	2	2	2					
9	1	22417-200120	COTTER PIN 2.0X12	2	2	2					
10	1	26051-060002	NUT M 6	2	2	2					
11	1	26347-060002	U-NUT M 6	6	6	6					
12	1	1N1570-73150	SPRING,CHUTE	1	1	1					
13	1	1N1711-73170	RUBBER,SNOW PROTECT.	1	1	1					
14	1	1N3300-73202	DEFLECTOR, CHUTE 9W	1	1	1					
15	1	26051-060002	NUT M 6	2	2	2					
16	1	1N3390-73300	WORM,3X3L	1	1	1					
17	1	1N3390-73350	BEAKING,WORM	1	1	1					
18	1	22137-080000	WASHER 8, POLISHED	1	1	1					
19	1	22351-050020	SPRING PIN 5X20	1	1	1					
20	1	26051-080002	NUT M 8	1	1	1					
21	1	26117-080162	BOLT M 8X 16 PLATED	1	1	1					

Fig.25. GEAR CASE



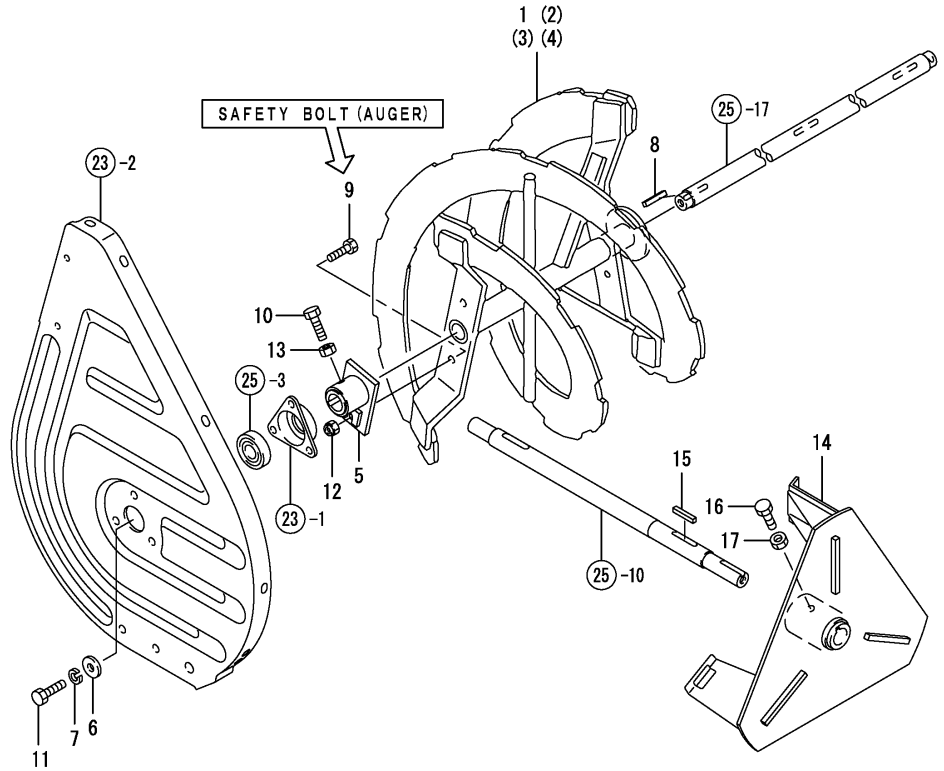
OCNP4-G09100 25. GEAR CASE

(A)=YSR90H
(B)=YSR90H-S
(C)=YSR100H-S

(D)=
(E)=
(F)=

REF.	LEV.	PARTS NO.	DESCRIPTION	QTY						I	R
				(A)	(B)	(C)	(D)	(E)	(F)		
1	1	1N3370-74000	CASE,SNOW REMV.GEAR	1	1	1					
2	1	1N3021-74010	COVER,SNOW RMV.GR.CS	1	1	1					
3	1	1N3021-74020	PACKING,SNOW RMV.CS.	1	1	1					
4	1	1N3021-74130	BOLT M14,DRAIN	1	1	1					
5	1	22190-080000	SEAL WASHER 8(BOLT)	1	1	1					
6	1	22190-140000	SEAL WASHER 14(BOLT)	1	1	1					
7	1	26016-060252	BOLT M 6X 25	5	5	5					
8	1	26107-080162	BOLT M 8X 16 PLATED	1	1	1					
9	1	1N3021-74030	WORM 3L2	1	1	1					
10	1	1N3370-74050	SHAFT,BLOWER	1	1	1					
11	1	1N3021-74080	COLLAR 18X25X20.5	1	1	1					
12	1	22550-070300	KEY 7X30	1	1	1					
13	1	24101-060034	BALL BEARING	1	1	1					
14	1	24101-060044	BALL BEARING #6004	1	1	1					
15	1	24421-203508	SEAL, OIL	1	1	1					
16	1	1N3370-74040	WHEEL 3X20,WORM	1	1	1					
17	1	1N3370-74200	SHAFT 710,AUGER	1	1						
18	1	1N3410-74200	SHAFT,AUGER 800							1	
19	1	22252-000420	CIRCLIP 42	1	1	1					
20	1	22550-050300	KEY 5X30	1	1	1					
21	1	24101-060044	BALL BEARING #6004	2	2	2					
22	1	24421-204208	SEAL TC20 42 08, OIL	2	2	2					
23	1	1N3021-74200	FIXTURE,GEAR CASE								1
24	1	22137-080000	WASHER 8, POLISHED								8
25	1	26018-080202	BOLT M 8X 20								2
26	1	26051-080002	NUT M 8								4
27	1	26117-080202	BOLT M 8X 20 PLATED								4

Fig.26. AUGER & BLOWER



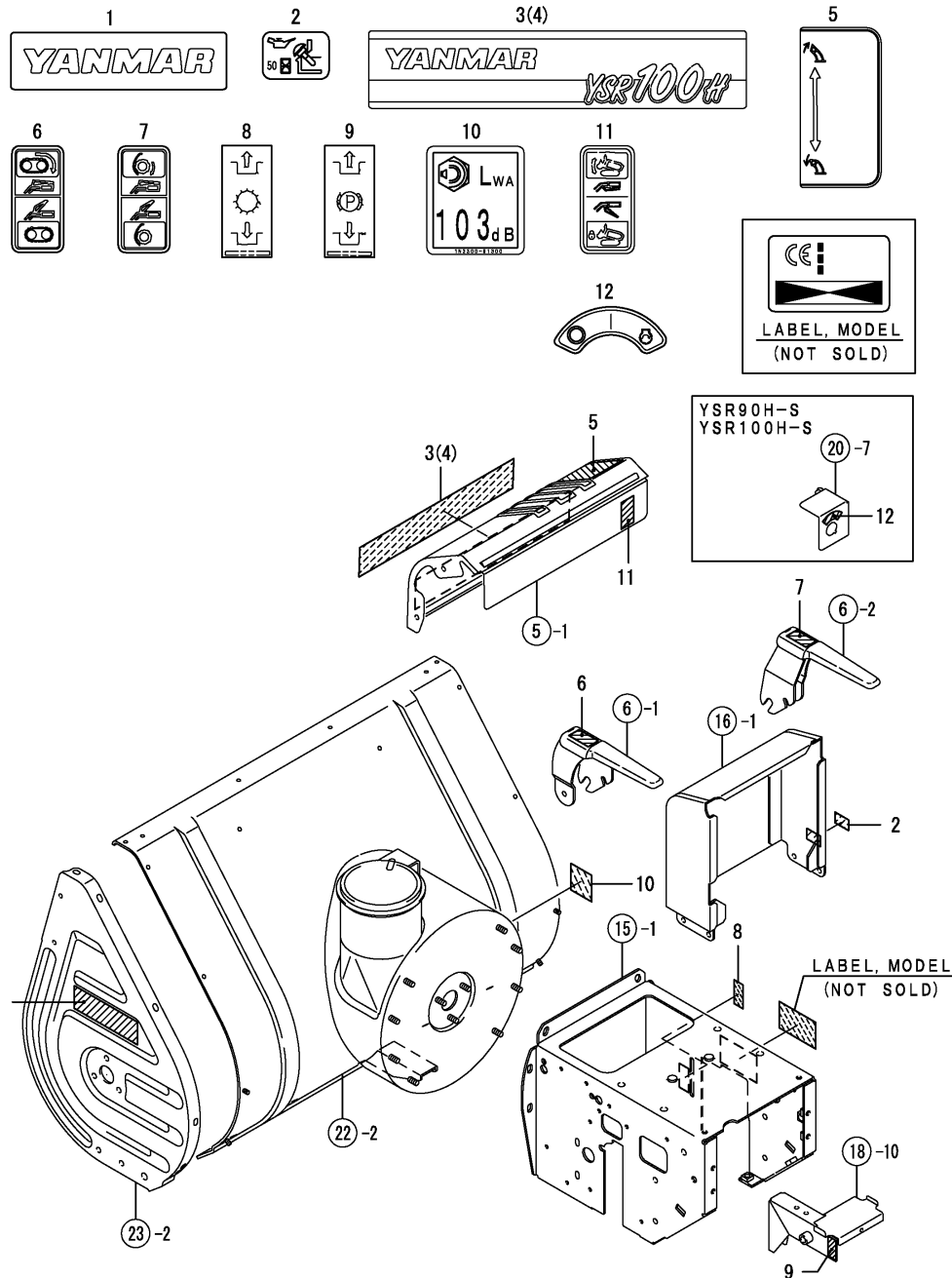
0CNP4-G09100 26. AUGER & BLOWER

(A)=YSR90H
(B)=YSR90H-S
(C)=YSR100H-S

(D)=
(E)=
(F)=

REF.	LEV.	PARTS NO.	DESCRIPTION	QTY						I	R
				(A)	(B)	(C)	(D)	(E)	(F)		
1	1	1N3370-75000	AUGER, L 710	1	1						
2	1	1N3370-75100	AUGER, R 710	1	1						
3	1	1N3410-75000	AUGER,L(800)						1		
4	1	1N3410-75100	AUGER,R(800)						1		
5	1	1N3330-75200	FLANGE,AUGER	2	2	2					
6	1	22157-080000	WASHER 8	2	2	2					
7	1	22217-080000	SPRING WASHER 8	2	2	2					
8	1	22550-050300	KEY 5X30	2	2	2					
9	1	26116-060202	BOLT M 6X 20	2	2	2					
10	1	26116-080162	BOLT 8X16	2	2	2					
11	1	26116-080252	BOLT M 8X 25 PLATED	2	2	2					
12	1	26347-060002	U-NUT M 6	2	2	2					
13	1	26717-080002	NUT 8	2	2	2					
14	1	1N3370-76000	BLOWER ASSY	1	1	1					
15	1	22550-050300	KEY 5X30	1	1	1					
16	1	26116-080202	BOLT M 8X 20 PLATED	1	1	1					
17	1	26717-080002	NUT 8	1	1	1					

Fig.27. LABELS

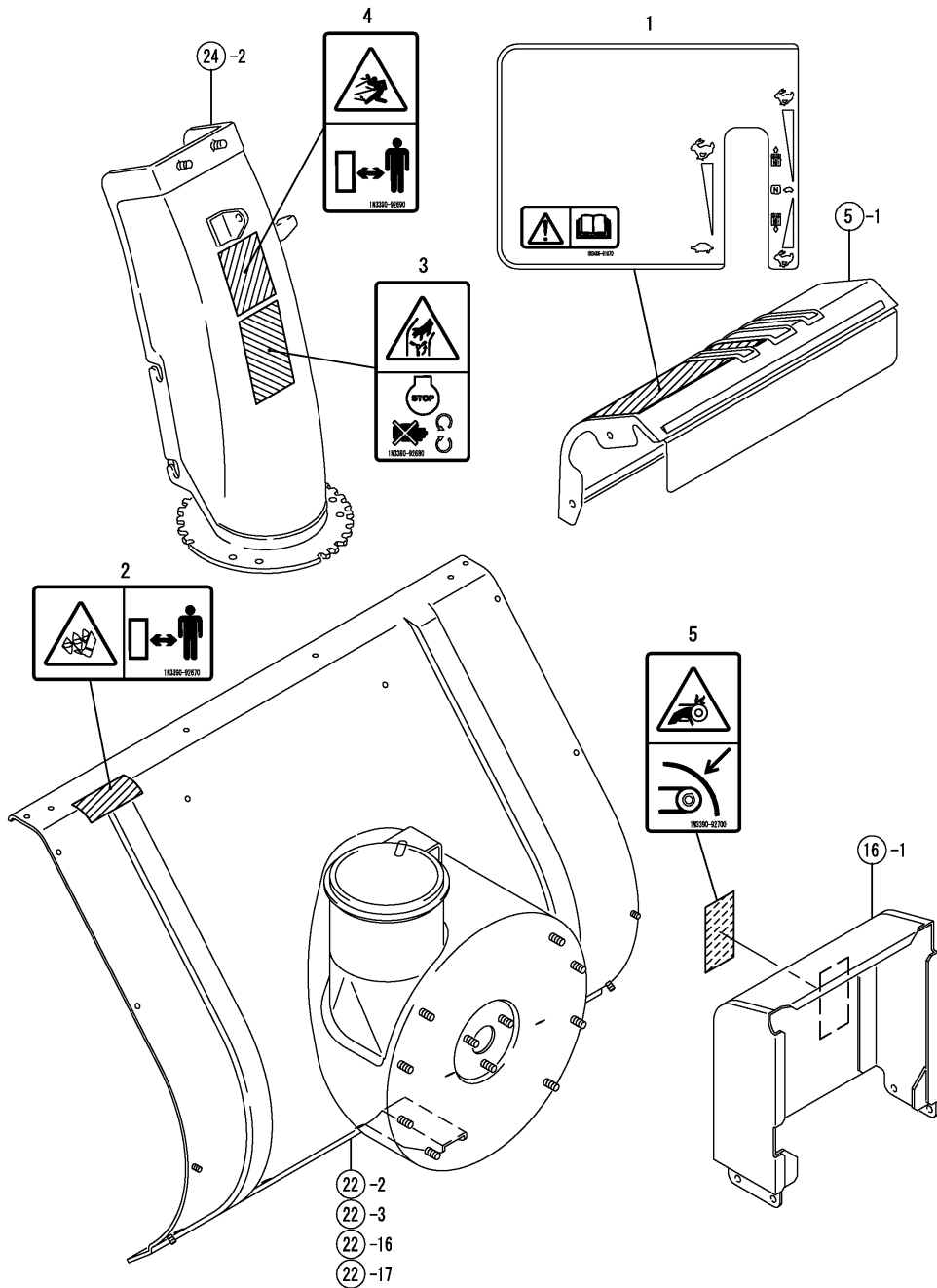


(A)=YSR90H
(B)=YSR90H-S
(C)=YSR100H-S

(D)=
(E)=
(F)=

REF.	LEV.	PARTS NO.	DESCRIPTION	QTY						I	R
				(A)	(B)	(C)	(D)	(E)	(F)		
1	1	1N1711-68190	MARK C "YANMAR"	2	2	2					
2	1	1N1711-68220	MARK,OIL CHECK	1	1	1					
3	1	1N3405-91050	MARK,MODEL	1	1						
4	1	1N3415-91050	MARK,MODEL						1		
5	1	1N3390-91080	MARK	1	1	1					
6	1	1N3021-91100	MARK,TRAVEL CLUTCH	1	1	1					
7	1	1N3021-91110	MARK,SNOW REM.CLUTCH	1	1	1					
8	1	1N3405-91250	MARK	1	1	1					
9	1	1N3400-91260	MARK	1	1	1					
10	1	1N3300-91300	MARK, SOUND LEVEL	1	1	1					
11	1	1N3390-91300	MARK	1	1	1					
12	1	1N3390-91090	MARK,SWITCH		1	1					

Fig.28. LABELS (SAFETY)



0CNP4-G09100 28. LABELS (SAFETY)

(A)=YSR90H
(B)=YSR90H-S
(C)=YSR100H-S

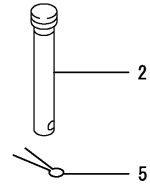
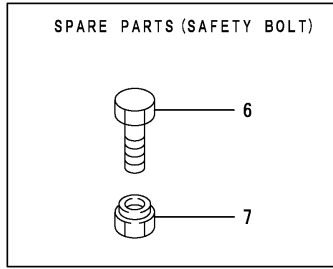
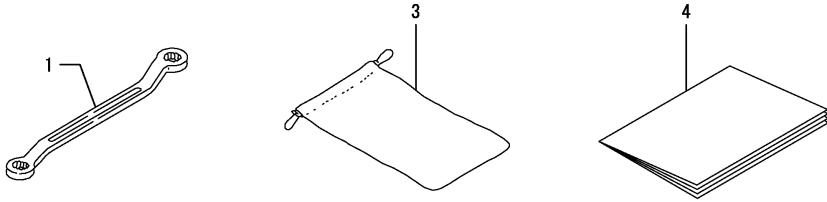
(D)=
(E)=
(F)=

REF.	LEV.	PARTS NO.	DESCRIPTION	QTY						I	R
				(A)	(B)	(C)	(D)	(E)	(F)		
1	1	1N3405-91070	LABEL,CAUTION	1	1	1					
2	1	1N3390-92670	LABEL,DANGER	1	1	1					
3	1	1N3390-92680	LABEL,WARNING	1	1	1					
4	1	1N3390-92690	LABEL,WARNING	1	1	1					
5	1	1N3390-92700	LABEL,CAUTION	1	1	1					

Fig.29. TOOLS & ACCESSORIES

(A)=YSR90H
 (B)=YSR90H-S
 (C)=YSR100H-S

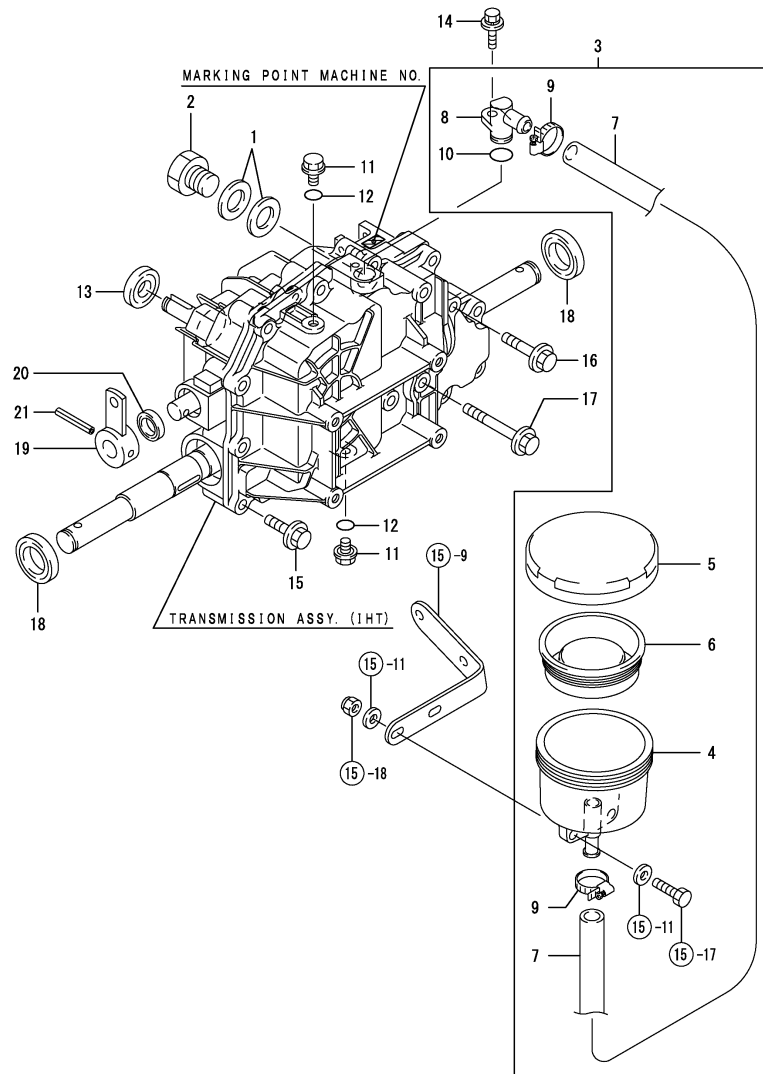
(D)=
 (E)=
 (F)=



REF.	LEV.	PARTS NO.	DESCRIPTION	QTY						I	R	
				(A)	(B)	(C)	(D)	(E)	(F)			
1	1	28160-100120	WRENCH 10X12	1	1	1						
2	1	1N3021-38101	PIN,AXLE	2	2	2						
3	1	1F1150-92000	BAG,TOOL	1	1	1						
4	1	1N3390-96100	MANUAL, INSTRUCTION	1	1	1						
5	1	22417-200120	COTTER PIN 2.0X12	2	2	2						
6	1	26116-060202	BOLT M 6X 20	10	10	10						1
7	1	26347-060002	U-NUT M 6	10	10	10						1

Remarks
 (1) IT IS A SPARE PART FOR SAFETY BOLT, GROUP NO.26, REF. NO.9.

Fig.30. TRANSMISSION



(A)=YSR90H
(B)=YSR90H-S
(C)=YSR100H-S

(D)=
(E)=
(F)=

REF.	LEV.	PARTS NO.	DESCRIPTION	QTY						I	R
				(A)	(B)	(C)	(D)	(E)	(F)		
1	1	23414-200026	GASKET 20	2	2	2					
2	1	23887-200002	PLUG 20, HEX.	1	1	1					
3	1	1N3021-23040	SUB TANK KIT	1	1	1					
4	2	1N3021-23051	SUB TANK	1	1	1					
5	2	1N3021-23060	CAP, SUB-TANK	1	1	1					
6	2	1N3021-23070	DIAPHRAGM,SUB-TANK	1	1	1					
7	2	1N3021-23100	OIL HOSE	1	1	1					
8	2	194856-24920	ELBOW	1	1	1					
9	2	194856-24970	HOSE CLAMP 25	2	2	2					
10	2	24311-000140	O-RING 1A P-14.0	1	1	1					
11	1	23491-080002	PLUG 8	2	2	2					
12	1	24311-000090	O-RING 1A P-9.0	2	2	2					
13	1	24421-153507	SEAL TC15 35 07, OIL	1	1	1					
14	1	26018-060162	BOLT M6X16	1	1	1					
15	1	26476-080302	BOLT M 8X 30	14	14	14					
16	1	26476-080402	TAPPING,SCREW 8* 40	1	1	1					
17	1	26476-080652	TAPPING SCREW 8*65	3	3	3					
18	1	24421-254208	SEAL TC25 42 08, OIL	2	2	2					
19	1	1N3021-26050	LEVER ASSY, CONTROL	1	1	1					
20	1	194065-27270	SEAL TC16 26 6, OIL	1	1	1					
21	1	22351-060040	SPRING PIN 6X40	1	1	1					

Remarks

NOTE: A MACHINE IN WHICH THE TRANSMISSION UNIT IS PUT INTO EFFECT BEARS THE STAMPED NUMBER TO INDICATE THIS GROUP NO.

*P/#7N3021-20030, TRANSMISSION (IHT) ASSY.: (PARTS OTHER THAN THOSE ILLUSTRATED CAN NOT BE DISASSEMBLED.)

Part Number Index

All parts are stipulated in the order of part numbers.

(Depending on the area in which the part is used.)

This index will display the location of the part according to each part number.

PARTS No. INDEX

PARTS No.	Fig.	Ref.No.
160797-77270	20	9
194065-27270	30	20
194080-58820	1	7
194273-47910	1	24
194856-24920	30	8
194856-24970	30	9
1A1140-58050	12	5
1A1470-40900	19	4
1C1011-45020	7	20
1C6320-64680	8	6
	12	7
1C6560-92610	11	3
1E4760-43090	9	7
	8	8
	10	11
1E5100-51430	10	12
1E6102-84960	20	5
1E6102-84970	19	3
	20	6
1E6570-64760	8	7
1E6680-64240	12	6
1E6740-64200	9	10
1F1150-92000	29	3
1F5300-43300	13	11
1J3999-02010	1	5
	11	1
1J3999-02160	24	1
1J3999-06000	7	12
1J3999-07000	7	1
	12	1
	19	1
1N1570-32950	9	6
1N1570-38200	23	1
1N1570-38210	22	1
1N1570-51130	1	25
1N1570-73150	24	12
1N1710-32600	1	6
	7	7
1N1710-51350	18	8
1N1710-71062	22	4
1N1710-71071	22	5
1N1710-71072	22	5 -1
1N1710-82140	4	3
1N1711-35520	13	10
1N1711-51850	21	3
1N1711-51860	21	4
1N1711-68190	27	1
1N1711-68220	27	2
1N1711-71100-1	22	18
1N1711-73170	24	13

PARTS No.	Fig.	Ref.No.
1N1711-73240	24	4
1N1711-73280	24	5
1N1723-00061	1	1
1N1723-00331	1	4
1N1723-32350	8	5
	12	2
1N1960-73502	24	6
1N3020-71301	23	14
1N3020-71320	23	21
1N3021-00250	1	3
1N3021-11240	2	6
1N3021-12020	3	5
1N3021-12050	3	12
1N3021-12100	3	2
1N3021-12150	3	3
1N3021-12300	3	6
1N3021-23040	30	3
1N3021-23051	30	4
1N3021-23060	30	5
1N3021-23070	30	6
1N3021-23100	30	7
1N3021-26050	30	19
1N3021-31451	7	15
1N3021-31480	7	16
1N3021-31580	7	18
1N3021-32381	9	5
1N3021-34390	13	2
1N3021-34710	13	8
1N3021-34720	13	9
1N3021-36130	15	3
1N3021-36401	15	8
1N3021-38101	17	3
	29	2
1N3021-38150	17	4
1N3021-38170	17	5
1N3021-38500	17	7
1N3021-38600	17	8
1N3021-51550	20	2
1N3021-51560	20	3
1N3021-52300	20	8
1N3021-71500	23	10
1N3021-73201	24	3
1N3021-74010	25	2
1N3021-74020	25	3
1N3021-74030	25	9
1N3021-74080	25	11
1N3021-74130	25	4
1N3021-74200	25	23
1N3021-91100	27	6
1N3021-91110	27	7

PARTS No.	Fig.	Ref.No.
1N3260-73250	13	12
1N3269-71500	23	9
1N3300-02150	1	22
1N3300-25100	17	2
1N3300-31400	7	14
1N3300-31500	7	17
1N3300-34201	12	4
1N3300-51010	18	1
1N3300-51400	19	2
1N3300-51451	19	5
1N3300-51480	21	2
1N3300-51552	20	7
1N3300-71301	23	13
1N3300-71320	23	15
1N3300-71330	23	16
1N3300-71401	22	6
1N3300-73202	24	14
1N3300-91300	27	10
1N3320-71290	2	11
	6	3
1N3330-31350	7	13
1N3330-32090	8	3
1N3330-34651	13	6
1N3330-34700	13	7
1N3330-75200	26	5
1N3335-11080	2	3
1N3335-32050	8	2
1N3335-32090	8	4
1N3335-32200	9	1
1N3335-32350	9	4
1N3360-30300	4	6
1N3360-30350	4	7
1N3360-32000	8	1
1N3360-35150	14	4
1N3360-36650	15	10
1N3360-38000	17	1
1N3360-51100	18	2
1N3360-51150	18	3
1N3360-51170	18	4
1N3360-51200	18	5
1N3360-51210	18	6
1N3370-00200	1	2
1N3370-01000	1	16
1N3370-11000	2	1
1N3370-11050	2	2
1N3370-11200	2	5
1N3370-11271	2	7
1N3370-11310	2	9
1N3370-11400	2	10
1N3370-12000	3	1

PARTS No.	Fig.	Ref.No.
1N3370-12010	3	11
1N3370-12200	3	13
1N3370-31200	7	2
1N3370-31300	7	3
1N3370-31450	7	4
1N3370-31600	7	5
1N3370-31650	7	6
1N3370-31700	7	19
1N3370-32100	8	11
1N3370-32200	9	2
1N3370-32300	9	3
1N3370-32400	8	12
1N3370-33001	10	1
1N3370-33080	10	2
1N3370-33100	10	3
1N3370-33200	10	4
1N3370-33300	10	5
1N3370-33400	10	6
1N3370-33410	10	7
1N3370-33450	10	8
1N3370-33500	10	9
1N3370-33550	10	10
1N3370-33600	11	2
1N3370-34000	12	3
1N3370-35160	14	6
1N3370-36200	15	4
1N3370-38500	17	15
1N3370-51300	18	7
1N3370-51350	18	9
1N3370-51500	18	10
1N3370-71300	23	2
1N3370-71350	23	3
1N3370-74000	25	1
1N3370-74040	25	16
1N3370-74050	25	10
1N3370-74200	25	17
1N3370-75000	26	1
1N3370-75100	26	2
1N3370-76000	26	14
1N3390-02100	1	21
1N3390-30000	4	1
1N3390-31000	6	1
1N3390-31050	6	2
1N3390-34350	13	1
1N3390-34500	13	3
1N3390-34530	13	4
1N3390-34600	13	5
1N3390-35000	14	1
1N3390-35060	14	2
1N3390-35100	14	3

MODEL : YSR90H,100H
PC NO : 0CNP4-G09100

PARTS No. INDEX

PARTS No.	Fig.	Ref.No.
1N3390-35150	14	5
1N3390-35250	14	7
1N3390-35400	14	9
1N3390-35450	14	10
1N3390-38200	17	6
1N3390-73300	24	16
1N3390-73350	24	17
1N3390-91080	27	5
1N3390-91090	27	12
1N3390-91300	27	11
1N3390-92670	28	2
1N3390-92680	28	3
1N3390-92690	28	4
1N3390-92700	28	5
1N3390-96100	29	4
1N3400-02200	1	23
1N3400-11100	2	4
1N3400-11300	2	8
1N3400-30100	4	2
1N3400-35500	14	11
1N3400-51450	21	1
1N3400-91260	27	9
1N3405-35300	14	8
1N3405-36100	15	2
1N3405-36600	15	9
1N3405-51000	20	1
1N3405-91050	27	3
1N3405-91070	28	1
1N3405-91250	27	8
1N3410-74200	25	18
1N3410-75000	26	3
1N3410-75100	26	4
1N3415-32200	9	20
1N3415-36010	15	1
1N3415-91050	27	4
1S6240-61430	9	9
7N3390-73000	24	2
7N3405-30290	5	1
7N3405-37010	16	1
7N3405-71000	22	2
7N3405-71010	22	16
7N3415-71000	22	3
7N3415-71010	22	17

PARTS No.	Fig.	Ref.No.
-----------	------	---------

PARTS No.	Fig.	Ref.No.
-----------	------	---------

PARTS No.	Fig.	Ref.No.
-----------	------	---------



YANMAR CO., LTD.